



Product Catalogue

Punches, Pins & Die - Bush

+91 620-4511-890

+91 917-2817-569

www.rightradiustools.com

About Us

We Right Radius Tools are manufacturer and supplier of Punches, Knock Out Pins, Piercing Punches, Forming Punches, Extrusion Punches, Hex Punches and Sleeves.

All tools are manufactured using high quality of High Speed Steel from Japan and Europe.

These tools are manufactured with advance machines and well experienced workforce.

We have been known for our consistent quality and serving our customers with high standard tools.



Our Products

Piercing Punch

Material :- HSS (M2 & M35)
Coating :- TIN/TICN/TIALN



Extrusion Punch

Material :- HSS M2
Coating :- TIN/TICN/TIALN



Step Punch

Material:- HSS M2
Coating :- TIN/TICN



Hex Punch

Material:- HSS (M2 & M42)
Coating :- TIN/TICN



Forming Punch

Material:- HSS (M2 & M35)
Coating :- TIN/TICN/TIALN



Knock Out Pin / Ejector Pin

Material:- HSS (M2 & D2)



Sleeves / Die - Bush

Material:- HSS M2





MANUFACTURER OF HSS PUNCHES, CUTTING TOOLS, MOULD AND DIE ACCESSORIES



9172817569



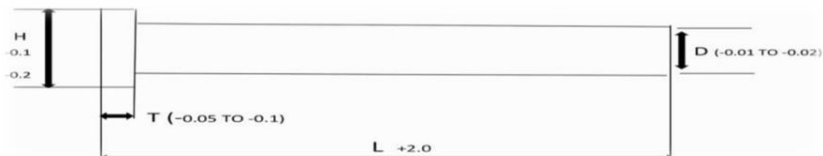
9172817569



rightradiustools1@gmail.com



www.rightradiustools.com


EJECTOR PINS - DIN 1530 (01-06-2023)

MATERIAL : SILVER STEEL - THROUGH HARDENED - HARDNESS: 52 HRC TO 58 HRC

D	H x T	LENGTH (L)													
		100	130	160	200	250	300	350	400	450	500	550/600	650/700	800	1000
1.0	2.5 x 1.2														
1.2	3 x 1.5														
1.5	3 x 1.5														
2.0	4 x 2														
2.5	5 x 2														
3.0	6 x 3														
3.5	7 x 3														
4.0	8 x 3														
4.5	8 x 3														
5.0	10 x 3														
5.5	10 x 3														
6.0	12 x 5														
6.5	12 x 5														
7.0	12 x 5														
8.0	14 x 5														
8.5	14 x 5														
9.0	14 x 5														
10.0	16 x 5														
10.5	16 x 5														
11.0	16 x 5														
12.0	18 x 7														
14.0	22 x 7														
16.0	22 x 7														
18.0	24 x 7														
20.0	26 x 8														
25.0	32 x 10														
1/8"	6 x 3														
3/16"	3/8 x 3/16														
1/4"	7/16 x 3/16														
3/8"	5/8 x 1/4														
1/2"	3/4 x 1/4														



EJECTOR PINS – JIS STANDARD

wef 01-06-23



MATERIAL : SILVER STEEL - THROUGH HARDENED - HARDNESS : 52 HRC TO 58 HRC

D	H x T	LENGTH (L)												
		100	130	160	200	250	300	350	400	450	500	600	700	800
1.0	6 x 4													
1.5	6 x 4													
2.0	6 x 4													
2.5	6 x 4													
3.0	6 x 4													
3.5	7 x 4													
4.0	8 x 6													
4.5	8 x 6													
5.0	9 x 6													
5.5	9 x 6													
6.0	10 x 6													
6.5	10 x 6													
7.0	11 x 6													
8.0	13 x 8													
9.0	14 x 8													
10.0	15 x 8													
12.0	17 x 8													
14.0	19 x 8													
16.0	21 x 8													
20.0	25 x 8													

- ORDERING CODE – EP JIS DxL

**EJECTOR PINS (HDS) - DIN 1530
(01-06-2023)**


MATERIAL : HDS - SURFACE NITRIDED - HARDNESS : HV 900 - 1100 - CORE HARDNESS 36 - 40 HRC

D (g6)	H x T	LENGTH (L)										
		100	130	160	200	250	300	350	400	450	500	600
1.0	2.5 x 1.2											
1.5	3 x 1.5											
2.0	4 x 2											
2.5	5 x 2											
3.0	6 x 3											
3.5	7 x 3											
4.0	8 x 3											
4.5	8 x 3											
5.0	10 x 3											
5.5	10 x 3											
6.0	12 x 5											
6.5	12 x 5											
7.0	12 x 5											
8.0	12 x 5											
9.0	12 x 5											
10.0	16 x 5											
12.0	18 x 7											
14.0	22 x 7											
16.0	22 x 7											
20.0	26 x 8											

- EPD-2 (D x L) - QTY

**EJECTOR PINS (HDS) – JIS STANDARD
(w.e.f. 01-06-22)**

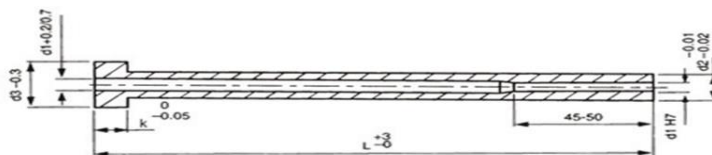

Code EPJ-2

MATERIAL : HDS - SURFACE NITRIDED - HARDNESS : HV 900 - 1100 - CORE HARDNESS 38 - 40 HRC

D (g6)	H x T	LENGTH (L)							
		100	150	200	250	300	350	400	500
1.0	6 x 4								
1.5	6 x 4								
2.0	6 x 4								
2.5	6 x 4								
3.0	6 x 4								
3.5	7 x 4								
4.0	8 x 6								
5.0	9 x 6								
6.0	10 x 6								
7.0	11 x 6								
8.0	13 x 8								
9.0	14 x 8								
10.0	15 x 8								
12.0	17 x 8								
16.0	21 x 8								
20.0	25 x 8								

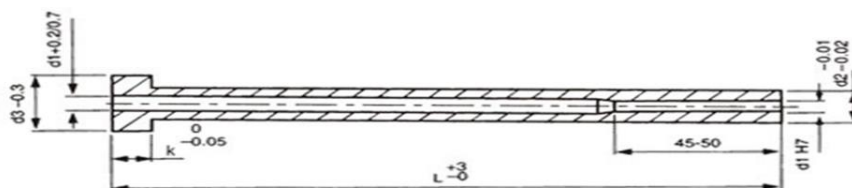
- **ORDERING CODE EPJ-2 DxL**

EJECTOR PINS
EJECTOR SLEEVES (SKD61) – DIN STD
 (w.e.f.01-06-2023)



MATERIAL : SKD61 (HDS) - SURFACE NITRIDED – HARDNESS : HV 900 – 1100

d2 (g6) O/D	d1 I/D	Head d3 x K	L														
			100	125	150	180	200	225	250	275	300	325	350	375	400	450	500
3	1.5	6 x 3	•	•	•	•	•	-	-	-	-	-	-	-	-	-	-
4	2.0/2.5	8 x 3	•	•	•	•	•	•	•	•	•	-	-	-	-	-	-
5	2.0/2.5	10 x 3	•	•	•	•	•	•	•	•	•	-	-	-	-	-	-
	3	10 x 3	•	•	•	•	•	•	•	•	•	-	-	-	-	-	-
6	2.0/2.5	12 x 5	•	•	•	•	•	•	•	•	•	•	•	•	•	•	•
	3	12 x 5	•	•	•	•	•	•	•	•	•	•	•	•	•	•	•
	3.5	12 x 5	•	•	•	•	•	•	•	•	•	•	•	•	•	•	•
	4	12 x 5	•	•	•	•	•	•	•	•	•	•	•	•	•	•	•
7	3.5	12 x 5	•	•	•	•	•	•	•	•	•	•	•	•	•	•	•
	4	12 x 5	•	•	•	•	•	•	•	•	•	•	•	•	•	•	•
	5	12 x 5	•	•	•	•	•	•	•	•	•	•	•	•	•	•	•
8	3	14 x 5	•	•	•	•	•	•	•	•	•	•	•	•	•	•	•
	3.5	14 x 5	•	•	•	•	•	•	•	•	•	•	•	•	•	•	•
	4	14 x 5	•	•	•	•	•	•	•	•	•	•	•	•	•	•	•
	5	14 x 5	•	•	•	•	•	•	•	•	•	•	•	•	•	•	•
	6	14 x 5	•	•	•	•	•	•	•	•	•	•	•	•	•	•	•
9	4	14 x 5	•	•	•	•	•	•	•	•	•	•	•	•	•	•	•
	5	14 x 5	•	•	•	•	•	•	•	•	•	•	•	•	•	•	•
	6	14 x 5	•	•	•	•	•	•	•	•	•	•	•	•	•	•	•
10	4	16 x 5	•	•	•	•	•	•	•	•	•	•	•	•	•	•	•
	5	16 x 5	•	•	•	•	•	•	•	•	•	•	•	•	•	•	•
	6/7	16 x 5	•	•	•	•	•	•	•	•	•	•	•	•	•	•	•
12	6	18 x 7	•	•	•	•	•	•	•	•	•	•	•	•	•	•	•
	8	18 x 7	•	•	•	•	•	•	•	•	•	•	•	•	•	•	•
16	10	22 x 7	•	•	•	•	•	•	•	•	•	•	•	•	•	•	•
	12	22 x 7	•	•	•	•	•	•	•	•	•	•	•	•	•	•	•

EJECTOR SLEEVES (SKD61) - JIS STANDARD


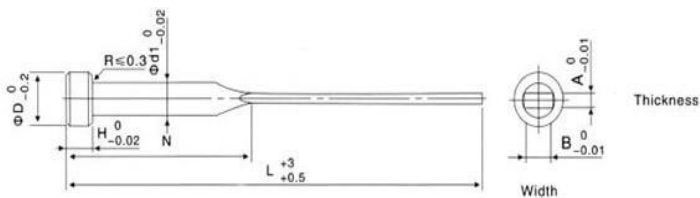
MATERIAL : SKD61 (HOT DIE STEEL) - SURFACE NITRIDED - HARDNESS: HV 900 – 1100

d2 (O/D)	d1 (I/D)	d3 x k	L									
			100	125	150	180	200	225	250	275	300	
3	1.5	6 x 4	•	•	•	•	•	-	-	-	-	
4	2	8 x 6	•	•	•	•	•	•	•	•	•	
5	2.5	9 x 6	•	•	•	•	•	•	•	•	•	
	3	9 x 6										
6	3	10 x 6	•	•	•	•	•	•	•	•	•	
	4	10 x 6										
8	4	13 x 8	•	•	•	•	•	•	•	•	•	
	5	13 x 8										
10	6	15 x 8	•	•	•	•	•	•	•	•	•	

• ABOVE PRICES ARE ALONG WITH THROUGH HARDENED PIN (LENGTH = L + 75mm - 100mm)

- **CODE TO ORDER - RRT-SLEEVES JIS d2xd1xL**
- **STOCK AVAILABLE**

BLADE EJECTOR

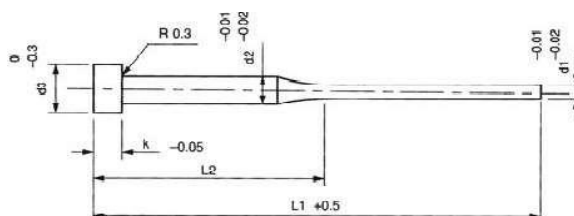


THROUGH HARDENED – HRC 58-60

A	B	d1	D	H	L			
					100	125	160	200
					N			
					50	63	80	100
0.8	3.5	4	8	3	•	•	-	-
1.0	3.5	4	8	3	•	•	-	-
1.2	3.5	4	8	3	•	•	-	-
1.0	4.5	5	10	3	•	•	•	•
1.2	4.5	5	10	3	•	•	•	•
1.5	4.5	5	10	3	•	•	•	•
1.0	5.5	6	12	5	•	•	•	•
1.2	5.5	6	12	5	•	•	•	•
1.5	5.5	6	12	5	•	•	•	•
2.0	5.5	6	12	5	•	•	•	•
1.5	7.5	8	14	5	-	•	•	•
2.0	7.5	8	14	5	-	•	•	•

A	B	d1	D	H	L			
					100	125	160	200
					N			
					50	63	80	100
0.8	3.5	4	6	4	•	•	-	-
1.0	3.5	4	6	4	•	•	-	-
1.2	3.5	4	6	4	•	•	-	-
1.0	4.5	5	9	6	•	•	•	•
1.2	4.5	5	9	6	•	•	•	•
1.5	4.5	5	9	6	•	•	•	•
1.0	5.5	6	10	6	•	•	•	•
1.2	5.5	6	10	6	•	•	•	•
1.5	5.5	6	10	6	•	•	•	•
2.0	5.5	6	10	6	•	•	•	•
1.5	7.5	8	13	8	-	•	•	•
2.0	7.5	8	13	8	-	•	•	•

• CODE TO ORDER –RRT-BEP A x B x L (D x H)


STEP EJECTOR PINS


MATERIAL : SILVER STEEL - THROUGH HARDENED (DIN STD)

d2 X d1	HEAD DIMENSION d3 x k	L1			
		100	125	160	200
3 x 1.0	6 x 3	•	•	•	•
3 x 1.5		•	•	•	•
3 x 2.0		•	•	•	•
3 x 2.5		•	•	•	•
4 x 3.0	8 x 3	•	•	•	•

L1	100	125	160	200
L2	50	50	75	75

- **CODE TO ORDER - RRT-SEPD d2xd1Xl1**
- **STOCK AVAILABLE**





MATERIAL : SILVER STEEL - THROUGH HARDENED (JIS STD)

d2 x d1	HEAD DIMENSION d3 x k	L1			
		100	150	200	250
3 x 1.0	6 x 4	•	•	•	•
3 x 1.2		•	•	•	•
3 x 1.5		•	•	•	•
3 x 2.0		•	•	•	•
3 x 2.5		•	•	•	•

L1	100	150	200	250
L2	50	50	70	100

- **CODE TO ORDER - RRT-SEPJ d2xd1Xl1**
- **STOCK AVAILABLE**

ISO - 10243


CODE	COLOR	LOAD	 MIN. COMPRESSION (% OF FREE LENGTH)	 MIN. COMPRESSION (% OF FREE LENGTH)	 MAX. COMPRESSION (% OF FREE LENGTH)	 SOLID COMPRESSION (% OF FREE LENGTH)
VL	LIGHT GREEN	EXTRA LIGHT	30%	40%	50%	NOT RECOMMENDED
V	GREEN	LIGHT	25%	30%	40%	NOT RECOMMENDED
B	BLUE	MEDIUM	25%	30%	37.5	NOT RECOMMENDED
R	RED	HEAVY	20%	25%	30%	NOT RECOMMENDED
G	YELLOW	EXTRA HEAVY	17%	20%	25%	NOT RECOMMENDED





OUTER DIA (d)	INNER DIA	COLOUR	WIRE DETAILS (Width x Thickness)	FREE LENGTH (L)
10	5	V	1.7 x 1.1	25,32,38,44,51,64,76,89,102,305
		B	1.9 x 1.3	
		R	1.9 x 1.5	
		G	1.9 x 1.6	
12.5	6.3	V	2.4 x 1.4	25,32,38,44,51,64,76,89,102,115,305
		B	2.5 x 1.5	
		R	2.4 x 1.9	
		G	2.6 x 2.0	
16	8	V	3.2 x 1.5	25,32,38,44,51,64,76,89,102,115,127,139,152,305
		B	3.2 x 2.0	
		R	3.1 x 2.5	
		G	3.2 x 2.9	

20	10	VL	4.3 x 1.7	25,32,38,44,51,64,76,89,102,115,127,139,152,178,203,305
		V	4.0 x 2.1	
		B	4.1 x 2.4	
		R	4.0 x 3.3	
		G	4.1 x 3.8	
25	12.5	VL	5.4 x 2.2	25,32,38,44,51,64,76,89,102,115,127,139,152,178,203,305
		V	5.4 x 2.7	
		B	5.4 x 3.3	
		R	5.5 x 4.2	
		G	5.4 x 4.6	
32	16	VL	6.5 x 2.6	38,44,51,64,76,89,102,115,127,139,152,178,203,252,305
		V	6.8 x 3.3	
		B	6.8 x 4.0	
		R	7.1 x 5.4	
		G	7.3 x 5.9	

40	20	VL	8.0 x 3.4	51,64,76,89,102,115,127,139,152,178,203,229,252,305
		V	8.1 x 4.0	
		B	8.2 x 4.7	
		R	8.4 x 6.2	
		G	8.4 x 7.5	
50	25	VL	10.5 x 4.1	64,76,89,102,115,127,139,152,178,203,229,252,305
		V	10.9 x 5.3	
		B	11.1 x 5.8	
		R	11.1 x 7.6	
		G	11.5 x 9.0	
63	38	V	11 x 7.8	76,89,102,115,127,139,152,178,203,229,252,305
		B	11.5 x 9.1	
		R	11.6 x 12.3	
		Y	11.6 x 14.9	

• **CODE TO ORDER – RRT- COLOURxdxL**

JIS - B5012


CODE	COLOR	LOAD	 100000 CYCLES (% OF FREE LENGTH)	 50000 CYCLES (% OF FREE LENGTH)	 30000 CYCLES (% OF FREE LENGTH)	 SOLID DEFLECTIONS (DO NOT USE)
SF	YELLOW	EXTRA LIGHT	30%	40%	50%	58%
SL	LIGHT BLUE	LIGHT	32%	36%	40%	48%
SM	RED	MEDIUM	26%	29%	32%	38%
SH	GREEN	HEAVY	19%	22%	24%	28%
SB	BROWN	EXTRA HEAVY	16%	18%	20%	24%

OUTSIDE DIA	INSIDE DIA	FREE LENGTH (L)
6	3	10,12,15,20,25,30,35,40,45,50,300
8	4	10,15,20,25,30,35,40,45,50,55,60,65,70,75,80,300
10	5	15,20,25,30,35,40,45,50,55,60,65,70,75,80,90,300
12	6	15,20,25,30,35,40,45,50,55,60,65,70,75,80,90,300
14	7	25,30,35,40,45,50,55,60,65,70,75,80,90,100
16	8	20,25,30,35,40,45,50,55,60,65,70,75,80,90,100,125
18	9	20,25,30,35,40,45,50,55,60,65,70,75,80,90,100,125
20	11	20,25,30,35,40,45,50,55,60,65,70,75,80,90,100,125,150
22	11	25,30,35,40,45,50,55,60,65,70,75,80,90,100,125,150,175,200
25	13.5	25,30,35,40,45,50,55,60,65,70,75,80,90,100,125,150,175,200
27	13.5	25,30,35,40,45,50,55,60,65,70,75,80,90,100,125,150,175,200
30	16	25,30,35,40,45,50,55,60,65,70,75,80,90,100,125,150,175,200
35	19	40,45,50,55,60,65,70,75,80,90, 125,150,175,200
40	22	40,45,50,55,60,65,70,75,80,90,100,125,150,175,200,225,250,275,300
50	27.5	50,55,60,65,70,75,80,90,100,125,150,175,200,225,250,275,300
60	33	60,65,70,75,80,90,100,125,150,175,200,225,250,275,300,350,400,450,500
70	38.5	70,80,90,100,125,150,175,200,250,300,350

• **CODE TO ORDER – RRT- COLOURxdxL**



ISO – 10243
(w.e.f 1-06-22)

DIA	LENGTH	GREEN	BLUE	RED	YELLOW
10	25	28	32	36	40
	32	32	36	40	43
	38	36	39	43	46
	44	41	43	46	58
	51	43	46	58	64
	64	46	50	64	69
	76	50	62	70	81
	89	58	69	77	88
	102	72	82	88	94
305	162	232	304	343	

DIA	LENGTH	GREEN	BLUE	RED	YELLOW
12	25	34	36	41	44
	32	39	41	44	55
	38	42	44	55	58
	44	45	55	58	62
	51	55	58	62	65
	64	59	62	65	76
	76	64	65	73	79
	89	68	73	76	83
	102	77	87	99	119
	305	178	235	328	364

DIA	LENGTH	GREEN	BLUE	RED	YELLOW
16	25	36	45	45	59
	32	41	55	55	62
	38	44	58	58	65
	44	55	62	62	73
	51	58	65	65	76
	64	62	73	73	83
	76	65	77	77	88
	89	73	84	84	95
	102	76	95	95	99
	115	83	123	123	134
	127	95	138	133	174
	139	110	154	165	190
	305	228	349	349	433

DIA	LENGTH	GREEN	BLUE	RED	YELLOW	LIGHT GREEN
20	25	50	55	73	90	63
	32	55	68	77	95	67
	38	68	74	83	100	77
	44	73	78	91	105	81
	51	77	83	100	119	86
	64	81	96	105	123	99
	76	95	100	119	136	103
	89	99	109	145	154	122
	102	108	119	154	168	131
	115	121	136	168	190	144
	127	130	150	186	209	153
	139	134	158	199	227	167
	152	143	173	213	244	176
	178	205	210	242	264	-
203	220	233	264	297	-	
305	437	468	564	650	532	

DIA	LENGTH	GREEN	BLUE	RED	YELLOW	LIGHT GREEN
25	25	57	71	81	99	81
	32	71	77	96	110	86
	38	81	86	105	120	100
	44	85	101	114	129	109
	51	99	105	129	143	124
	64	108	120	143	158	139
	76	123	129	158	176	152
	89	150	167	171	195	186
	102	165	181	186	219	205
	115	179	200	214	238	224
	127	197	214	243	261	253
	139	226	233	261	286	281
	152	239	252	290	309	306
	178	258	271	328	347	324
	203	295	305	380	390	362
305	626	673	735	788	715	

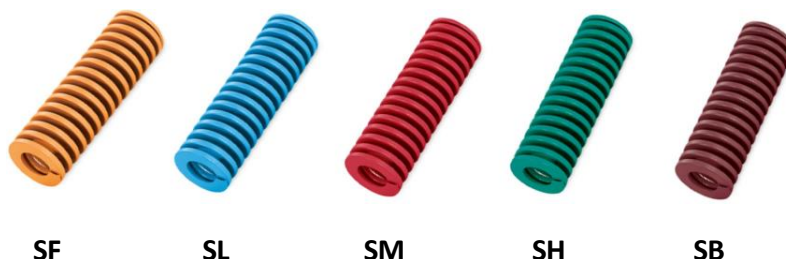
DIA	LENGTH	GREEN	BLUE	RED	YELLOW	LIGHT GREEN
32	38	105	109	142	161	129
	44	110	124	152	176	139
	51	124	139	162	186	152
	64	143	158	186	219	167
	76	158	176	219	243	195
	89	181	200	243	271	224
	102	205	224	271	314	253
	115	235	258	316	354	286
	127	261	305	352	384	324
	139	292	320	387	435	353
	152	311	344	431	483	381
	178	350	378	474	540	429
	203	392	425	545	616	486
	254	449	502	616	678	548
	305	659	774	868	1007	811

DIA	LENGTH	GREEN	BLUE	RED	YELLOW	LIGHT GREEN
50	64	306	326	405	475	359
	76	368	380	465	574	403
	89	431	463	566	649	474
	102	482	536	600	714	528
	115	534	571	669	803	599
	127	608	637	757	886	668
	139	639	674	823	978	697
	152	681	743	929	1065	748
	178	753	864	1034	1174	847
	203	868	967	1151	1303	937
	229	1095	1242	1457	1721	1216
	254	1095	1242	1457	1721	1216
	305	1411	1691	1914	2287	1695

DIA	LENGTH	GREEN	BLUE	RED	YELLOW	LIGHT GREEN
40	51	160	169	209	244	189
	64	194	204	244	284	214
	76	214	244	284	338	265
	89	264	278	338	402	314
	102	303	323	402	466	363
	115	338	362	466	541	414
	127	382	407	531	605	468
	139	407	432	541	639	508
	152	452	466	585	670	539
	178	497	557	639	739	599
	203	561	614	705	803	677
	229	660	709	809	902	757
	254	660	709	809	902	757
	305	847	966	1130	1323	1047

DIA	LENGTH	GREEN	BLUE	RED	YELLOW
63	76	582	686	1041	1431
	89	669	736	1093	1509
	102	824	842	1258	1708
	115	881	898	1362	1821
	127	928	946	1431	1943
	139	966	1008	1523	2048
	152	1085	1153	1657	2220
	178	1162	1352	1943	2619
	203	1284	1513	2185	2939
	229	1717	1821	2774	3684
	254	1717	1821	2774	3684
	305	2168	2238	3424	4508

JIS STD - B 5012 (w.e.f 1-06-22)



Dia	L	YELLOW	BLUE	RED	GREEN	BROWN
		SF	SL	SM	SH	SB
6	15	50	50	53	55	70
	20	50	55	57	63	75
	25	65	65	67	69	78
	30	65	65	67	69	78
	35	66	66	68	70	80
	40	74	74	76	78	85
	45	81	82	84	86	90
	50	89	92	92	95	97
	300	273	284	291	305	315

Dia	L	YELLOW	BLUE	RED	GREEN	BROWN
		SF	SL	SM	SH	SB
8	15	43	38	33	35	61
	20	43	38	37	35	61
	25	48	40	38	44	65
	30	53	42	38	53	70
	35	57	45	43	61	75
	40	61	48	50	65	79
	45	65	51	55	70	83
	50	70	54	65	75	87
	55	75	60	75	79	91
	60	79	65	85	83	91
	65	83	70	90	91	100
	70	87	79	100	96	104
	75	96	83	110	100	108
80	104	87	115	104	118	
300	247	247	263	273	305	

Dia	L	YELLOW	BLUE	RED	GREEN	BROWN
		SF	SL	SM	SH	SB
10	15	43	53			
	20	43	53	32	35	61
	25	47	47	35	43	65
	30	53	47	39	53	69
	35	57	47	53	61	74
	40	61	57	57	65	78
	45	65	61	61	69	82
	50	69	65	65	74	86
	55	74	69	69	78	90
	60	78	74	69	82	90
	65	82	82	74	90	99
	70	86	90	78	95	103
	75	95	99	82	99	107
	80	103	107	90	103	116
	90	110	116	116	121	126
	100	116	121	121	126	137
300	284	294	305	331	347	

Dia	L	YELLOW	BLUE	RED	GREEN	BROWN
		SF	SL	SM	SH	SB
12	20	57	53	43	47	74
	25	61	57	57	57	78
	30	65	61	53	65	82
	35	69	65	61	69	86
	40	74	69	69	74	90
	45	78	74	74	82	99
	50	82	78	78	86	103
	55	86	82	82	90	111
	60	90	86	86	99	116
	65	95	95	90	107	120
	70	99	99	95	111	124
	75	103	103	99	116	132
	80	116	111	107	120	140
	90	116	116	116	126	147
	100	126	126	126	137	158
300	336	336	347	378	420	

Dia	L	YELLOW	BLUE	RED	GREEN	BROWN
		SF	SL	SM	SH	SB
14	20/25	74	65	69	74	78
	30	78	69	74	78	82
	35	82	74	78	82	86
	40	86	78	82	86	95
	45	90	82	86	90	103
	50	95	86	90	95	107
	55	99	90	95	99	116
	60	103	95	99	103	120
	65	107	99	103	107	128
	70	111	103	107	115	137
	75	116	107	111	124	145
	80	120	111	116	128	154
90	128	120	124	128	163	
100	143	150	160	175	190	
Dia	L	YELLOW	BLUE	RED	GREEN	BROWN
		SF	SL	SM	SH	SB
16	20/25	82	86	90	95	99
	30	86	90	95	99	103
	35	90	95	99	103	107
	40	95	99	103	107	116
	45	99	103	107	111	124
	50	103	107	111	116	128
	55	107	111	116	120	137
	60	111	116	120	124	149
	65	120	124	128	132	154
	70	124	128	132	137	163
	75	128	132	137	141	171
	80	132	137	141	145	180
	90	137	141	145	149	192
	100	141	145	149	154	205
125	176	190	210	230	260	
Dia	L	YELLOW	BLUE	RED	GREEN	BROWN
		SF	SL	SM	SH	SB
18	25	82	86	90	99	103
	30	90	95	99	103	107
	35	95	99	103	107	111
	40	99	103	107	111	116
	45	103	107	111	116	124
	50	107	111	116	124	132
	55	111	116	120	132	137
	60	116	120	124	137	145
	65	120	124	132	145	149
	70	124	132	137	149	154
	75	128	137	141	154	163
	80	137	141	145	163	171
	90	141	145	149	171	201
100	145	154	159	180	205	

Dia	L	YELLOW	BLUE	RED	GREEN	BROWN
		SF	SL	SM	SH	SB
20	25	82	86	90	95	99
	30	86	90	95	99	103
	35	90	99	103	107	111
	40	95	103	107	111	116
	45	99	107	111	116	120
	50	103	111	116	120	137
	55	107	116	120	124	145
	60	111	120	124	128	154
	65	116	124	128	133	163
	70	120	128	132	138	167
	75	124	137	137	146	180
	80	128	141	145	155	188
	90	137	149	154	164	201
	100	145	159	163	172	217
125	154	167	184	189	234	
150	171	188	205	215	265	

Dia	L	YELLOW	BLUE	RED	GREEN	BROWN
		SF	SL	SM	SH	SB
22	25	82	86	90	95	95
	30	86	90	95	99	103
	35	95	95	99	103	111
	40	99	103	107	111	120
	45	103	107	111	116	124
	50	107	111	116	120	128
	55	111	116	121	124	137
	60	116	120	125	128	145
	65	120	124	129	132	154
	70	124	128	138	141	163
	75	128	132	142	146	180
	80	132	137	146	150	184
	90	141	145	150	155	201
	100	149	154	164	168	217
	125	163	171	176	181	260
	150	184	209	215	225	307

Dia	L	YELLOW	BLUE	RED	GREEN	BROWN
		SF	SL	SM	SH	SB
25	25	85	90	95	99	113
	30	90	95	99	104	118
	35	95	99	104	113	127
	40	99	104	108	118	132
	45	104	108	113	127	146
	50	108	113	118	132	155
	55	113	118	123	137	165
	60	118	127	132	146	174
	65	123	132	137	155	179
	70	128	138	142	161	194
	75	132	142	156	166	204
	80	138	147	161	170	208
	90	151	161	170	189	227
	100	166	170	175	194	240
	125	180	198	208	246	293
150	213	232	236	274	321	
175	236	255	265	321	358	

Dia	L	YELLOW	BLUE	RED	GREEN	BROWN
		SF	SL	SM	SH	SB
30	25	90	96	114	124	128
	30	96	100	119	128	132
	35	100	105	124	138	147
	40	105	109	132	151	156
	45	109	114	142	156	161
	50	114	124	151	161	170
	55	119	132	161	170	185
	60	124	142	166	185	198
	65	128	151	170	194	204
	70	132	156	185	198	217
	75	138	161	194	217	232
	80	142	166	198	232	250
	90	147	194	223	250	284
	100	151	204	240	284	341
	125	189	255	293	331	358
150	227	307	340	401	434	
175	255	380	405	453	490	
200	284	448	481	519	565	

Dia	L	YELLOW	BLUE	RED	GREEN	BROWN
		SF	SL	SM	SH	SB
27	25	96	100	105	114	124
	30	100	105	109	119	132
	35	105	114	119	128	138
	40	109	119	124	132	147
	45	114	124	128	138	156
	50	119	128	132	142	166
	55	124	132	142	156	175
	60	128	138	151	166	194
	65	132	147	156	170	198
	70	138	151	161	175	208
	75	142	161	166	189	217
	80	147	166	175	198	232
	90	161	185	194	217	255
	100	170	204	211	236	278
	125	194	236	250	288	326
150	223	269	293	335	396	
175	255	307	340	396	471	

Dia	L	YELLOW	BLUE	RED	GREEN	BROWN
		SF	SL	SM	SH	SB
35	40	114	132	156	170	189
	45	119	142	170	189	204
	50	128	156	185	198	227
	55	132	166	194	223	246
	60	138	175	213	236	265
	65	147	189	224	255	284
	70	156	198	238	274	302
	75	166	217	257	293	316
	80	175	227	271	312	326
	90	194	250	295	331	368
	100	208	278	323	377	401
	125	255	331	394	443	481
	150	297	401	456	513	570
	175	335	453	518	593	655
	200	377	500	584	673	738

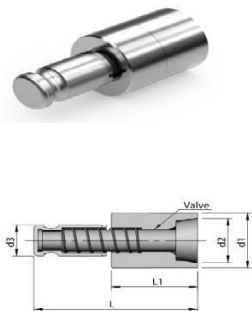
Dia	L	YELLOW	BLUE	RED	GREEN	BROWN
		SF	SL	SM	SH	SB
40	40	134	194	224	254	273
	45	142	200	227	267	307
	50	150	214	249	278	318
	55	168	226	268	305	342
	60	180	249	293	328	362
	65	193	263	313	349	392
	70	200	284	333	368	412
	75	208	299	341	399	426
	80	224	318	361	417	462
	90	249	348	396	462	501
	100	278	377	436	497	546
	125	323	462	529	595	659
	150	377	536	618	705	763
	175	437	610	707	803	877
	200	497	689	783	902	981
	225	546	817	957	1001	1095
	250	595	833	966	1100	1204
275	672	970	1155	1344	1365	
300	751	1134	1344	1449	1523	

Dia	L	YELLOW	BLUE	RED	GREEN	BROWN
		SF	SL	SM	SH	SB
60	60	437	620	601	684	867
	70	442	635	659	749	911
	80	466	659	729	842	966
	90	506	709	858	927	1035
	100	566	763	986	1011	1119
	125	674	937	1133	1239	1358
	150	774	1090	1337	1442	1555
	175	882	1340	1539	1639	1763
	200	1070	1631	1752	1812	2020
	225	1113	1680	1848	1974	2237
	250	1239	1733	1986	2144	2463
	275	1365	1995	2142	2363	2730
	300	1511	2039	2377	2525	2932
	350	1733	2310	2835	2940	3360
	400	1890	2730	3255	3360	3885

Dia	L	YELLOW	BLUE	RED	GREEN	BROWN
		SF	SL	SM	SH	SB
50	50	249	349	397	453	498
	55	268	355	420	475	517
	60	274	363	437	487	538
	65	281	391	456	520	592
	70	303	423	477	552	622
	75	323	445	502	588	649
	80	349	467	526	616	686
	90	374	518	585	691	746
	100	408	562	645	746	825
	125	498	676	774	904	989
	150	572	795	917	1073	1153
	175	647	904	1066	1227	1368
	200	736	1029	1199	1376	1567
	225	798	1155	1323	1502	1733
	250	895	1252	1462	1649	2132
	275	949	1363	1586	1838	2289
	300	1068	1461	1779	1996	2434
350	1313	1575	1995	2205	-	
400	1418	1785	2310	2520	-	

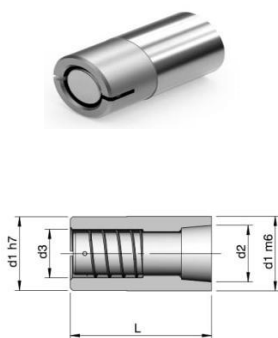
Dia	L	YELLOW	BLUE	RED	GREEN	BROWN
		SF	SL	SM	SH	SB
70	70	920	1071	1234	1407	1496
	80	940	1208	1391	1659	1680
	90	970	1355	1554	1848	1869
	100	1029	1496	1712	2000	2058
	125	1276	1848	2119	2468	2531
	150	1517	2200	2515	2930	3003
	175	1764	2552	2919	3392	3476
	200	1995	2903	3318	3859	3948
	250	2489	3607	4121	4783	4893
	300	2982	4310	4919	5712	5838
	350	3465	5014	5723	6641	6783
400	3780	5250	6090	7140		

AIR EJECTOR TYPE A



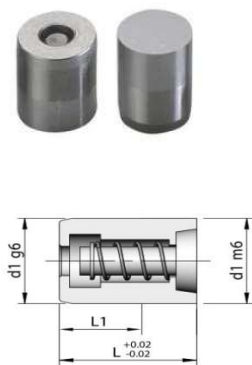
CODE	d1	d2	L	L1	d3	
APA-08	8	6.5	24	11	6	•
APA-10	10	7.5	24	11	6	•
APA-12	12	9.7	34	18	8	•
APA-14	14	11.8	34	18	8	•
APA-16	16	13	38	20	8	•
APA-18	18	15	46	22	12	•
APA-20	20	16	50	26	12	•
APA-25	25	20	50	26	12	•

AIR EJECTOR TYPE B



CODE	d1	L	d2	d3	
APB-06	6	12	4.5	4.2	•
APB-08	8	15	6	4.5	•
APB-10	10	20	7.5	7	•
APB-12	12	25	9	7.7	•
APB-16	16	30	12	10.3	•
APB-20	20	30	15	13	•
APB-25	25	30	20	15	•
APB-30	30	30	25	18	•

AIR EJECTOR TYPE C



CODE	d1	L	L1	
APC-08	8	12	7	•
APC-10	10			•
APC-12	12			•
APC-16	16	20	12	•
APC-20	20			•

- **STOCK AVAILABLE**

GAS VENTS


CODE	DIAMETER	LENGTH	
GVA-4	4	10	•
GVA-6	6	10	•
GVA-8	8	10	•
GVA-10	10	10	•
GVA-12	12	12	•



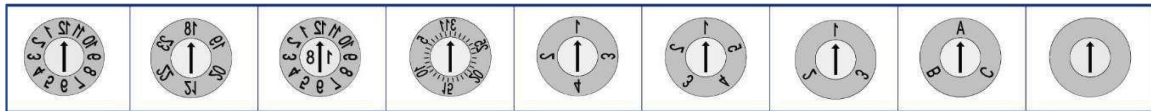
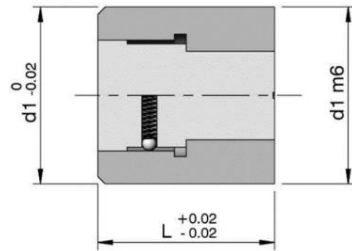
CODE	DIAMETER	LENGTH	
GVB-3	3	10	•
GVB-4	4	10	•
GVB-5	5	10	•
GVB-6	6	10	•
GVB-8	8	10	•
GVB-10	10	10	•
GVB-12	12	12	•



CODE	DIAMETER	LENGTH	
GVC-4	4	10	•
GVC-5	5	10	•
GVC-6	6	10	•
GVC-8	8	10	•
GVC-10	10	10	•
GVC-12	12	12	•
GVC-16	16	14	•

• **STOCK AVAILABLE**

MOULD DATE INDICATOR

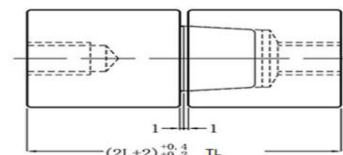
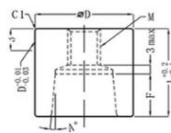
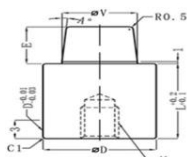


SIZE (d1XL)	ONLY MONTH	ONLY YEAR	MONTH & YEAR	1-31 DAYS	1-4	1-5	1-3	ABC	ARROW	0-3	0-9	A-L	RECYCLE
3x6	•	•	•										
3x8	•	•	•										
4x6	•	•	•	•	•	•	•	•	•	•	•	•	•
4x8	•	•	•	•	•	•	•	•	•	•	•	•	•
5x8	•	•	•	•	•	•	•	•	•	•	•	•	•
6x8	•	•	•	•	•	•	•	•	•	•	•	•	•
6x10	•	•	•	•	•	•	•	•	•	•	•	•	•
8x10	•	•	•	•	•	•	•	•	•	•	•	•	•
10x10	•	•	•	•	•	•	•	•	•	•	•	•	•
10x12	•	•	•	•	•	•	•	•	•	•	•	•	•
12x12	•	•	•	•	•	•	•	•	•	•	•	•	•
16x14	•	•	•	•	•	•	•	•	•	•	•	•	•
20x14	•	•	•	•	•	•	•	•	•	•	•	•	•

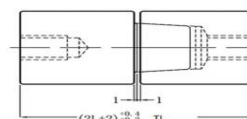
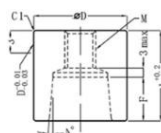
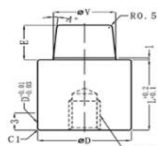
3 LAYER (6 YEARS & 12 MONTHS)	
6x10	•
8x10	•
10x12	•
12x14	•
16x14	•
20x14	•



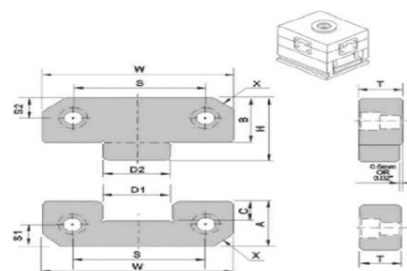
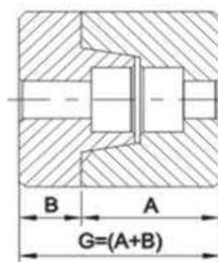
- STOCK AVAILABLE

ROUND TAPER INTERLOCK - 5°(TLA)


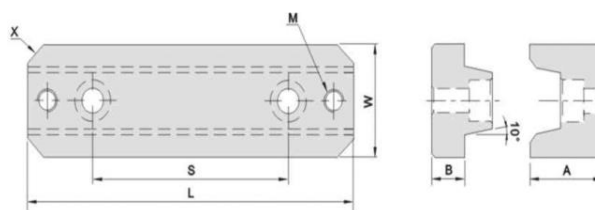
CODE	A	D	TL	L	V	E	F	Dk6	M	PRICE
TLA – 10	5°	10	30	14	7	6	5	+0.012	M4	•
TLA – 12	5°	12	30	14	8.5	6	5	+0.012	M4	•
TLA – 14	5°	14	30	14	9.3	6	5	+0.001	M5	•
TLA – 16	5°	16	30	14	10	6	5	+0.001	M5	•
TLA – 20	5°	20	40	19	13	9	8	+0.015	M6	•
TLA – 25	5°	25	50	24	16	12	11	+0.002	M8	•
TLA – 30	5°	30	60	29	20	15	14	+0.002	M10	•
TLA – 32	5°	32	60	29	20	15	14	+0.002	M10	•
TLA – 35	5°	12	70	34	24	18	17	+0.012	M12	•


ROUND TAPER INTERLOCK - 15°(TLB)


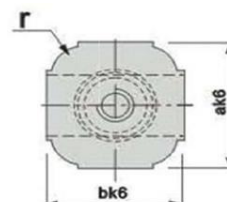
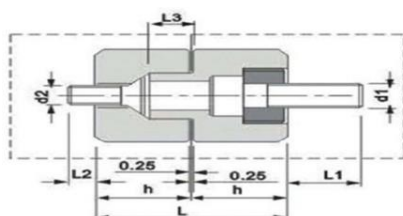
CODE	A	D	TL	L	E	F	Dk6	M x e	PRICE
TLB – 12	15°	12	34	16	4	8	+0.012	M4	•
TLB – 16	15°	16	34	16	7	8	+0.001	M5	•
TLB – 20	15°	20	54	26	10	13	+0.015	M8	•
TLB – 25	15°	25	54	26	10	13	+0.002	M8	•
TLB – 30	15°	30	72	35	14	20	+0.002	M10	•
TLB – 32	15°	32	72	35	14	20	+0.002	M10	•
TLB – 42	15°	42	92	45	18	25	+0.002	M10	•

STRAIGHT BLOCK SET (SSL)


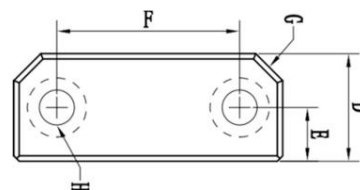
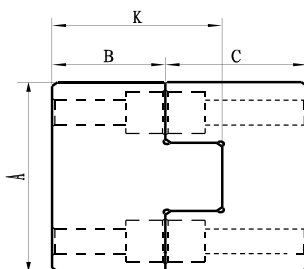
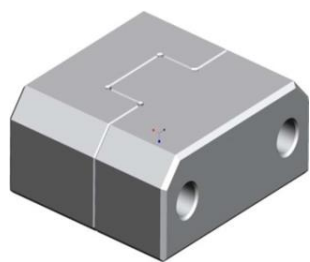
CODE	W	T	A	B	C	D1	D2	H	S	S1	S2	X	SCH	PRICE
SSL-38	38	13	22	22	8.5	12	12	30	22	7	7	5	M6	•
SSL-50	50	16	21.5	21.5	9.5	17	17	30	34	11	11	5	M6	•
SSL-75	75	19	36	36	15	25	25	50	50	18	18	8	M10	•
SSL-100	100	19	45	45	21	35	35	65	70	22	22	10	M10	•
SSL-125	125	25	45	45	21	45	45	65	84	22	22	10	M10	•

TAPER BLOCK SET (KY)


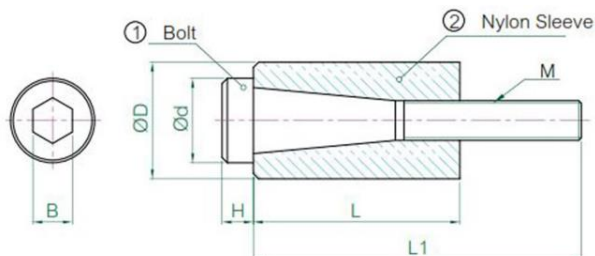
CODE	W	L	A	B	G	S	X	M	SCHS	PRICE
KY-50	25	50	17.5	8	25.5	-	5	M5	M5	•
KY-100	30	100	22	10	32	60	5	M6	M6	•
KY-150	40	150	25	13	38	100	5	M8	M8	•

SQUARE BLOCK SETS (SQIT)


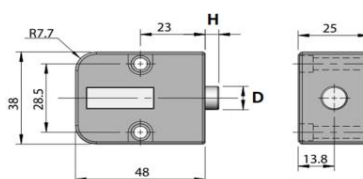
CODE	r	d1	d2	L1	L2	L3	L	h	a	b	PRICE
SQIT-20	4	M5	M4	12	4	3.5	28	14	20	20	•
SQIT-25	5	M6	M5	13	8	5.5	32	16	25	25	•
SQIT-32	6	M6	M6	15	12	7.5	36	18	32	32	•
SQIT-40	6	M10	M8	17	10	9.5	45	22.5	40	40	•

INTERLOCK (LM)


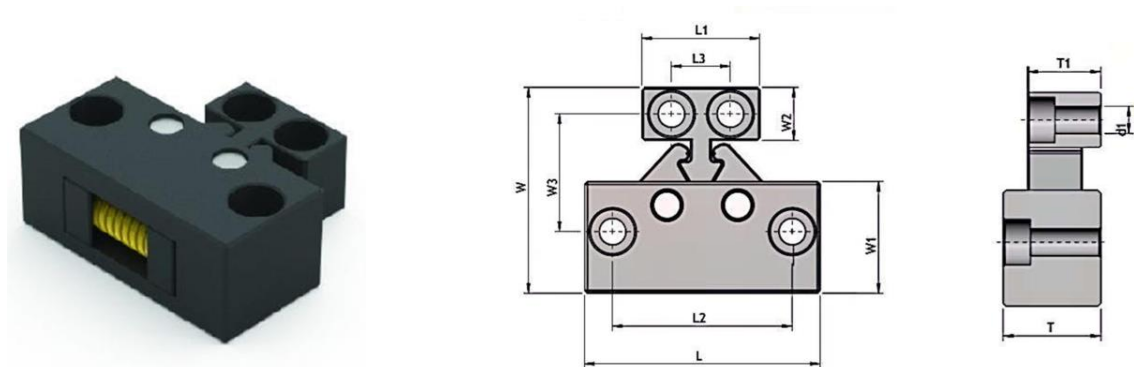
CODE	A	B	C	D	E	F	G	H	K	PRICE
LM - 35	35	15	20	20	10	24	C3	M5	20	•
LM - 50	50	20	25	25	12.5	34	C5	M6	30	•
LM - 75	75	25	30	50	25	52	C8	M8	40	•

PARTING LOCKS


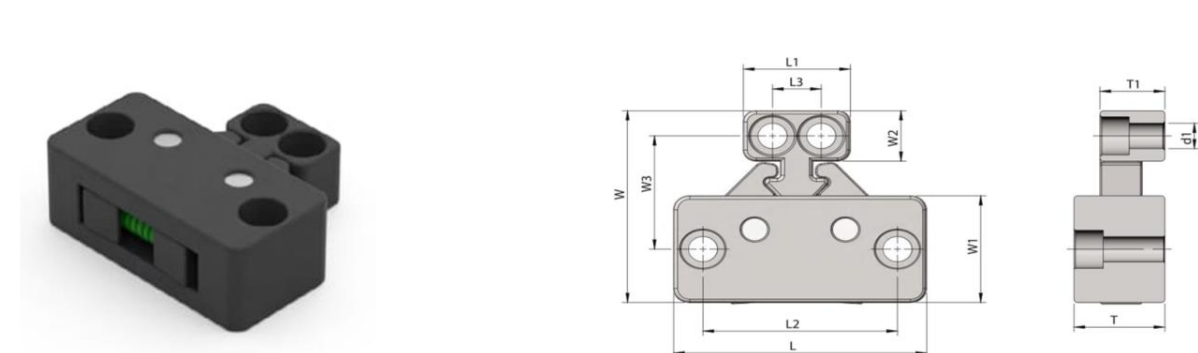
CODE	D	d	M	B	L	L1	H	PRICE
PL-10	10	8.5	M5	4	18	28	3	•
PL-12	12	11.5	M6	5	20	30	4.5	•
PL-13	13	11.5	M6	5	20	30	4.5	•
PL-16	16	14	M8	6	25	35	5.5	•
PL-20	20	14	M10	8	30	40	5.5	•
PL-25	25	16	M10	8	30	40	5.5	•
PL-25(M12)	25	18	M12	12	30	40	8.5	•
PL-30	30	18	M12	12	35	45	8.5	•

MOULD SHOT COUNTER


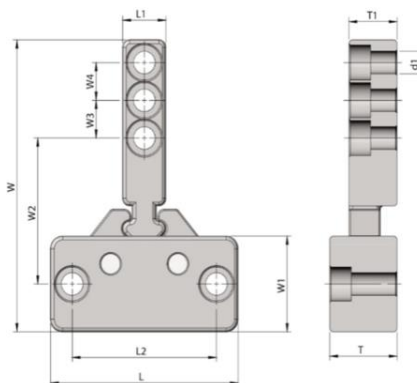
CODE	D	H	SCREW	PRICE
MSC-01	6.2	5.0	M4.0x25L	•
MSC-02	9.8	5.0	M4.0x25L	•
MSC ROUND	6.2	-	-	•

MOULD LATCH TYPE A


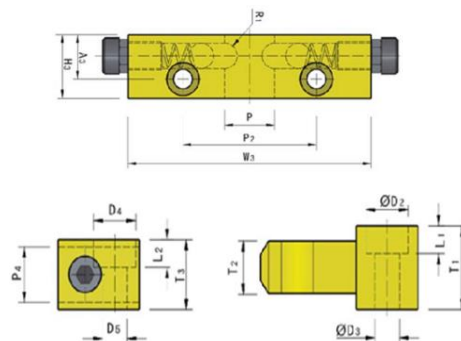
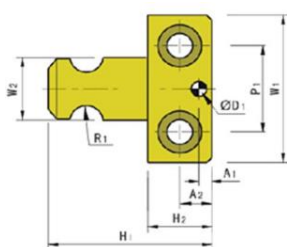
CODE	L	L1	L2	L3	W	W1	W2	W3	T	T1	d1	FORCE (kgs)	PRICE
LIGHT DUTY A	55	30	42	16	44	25	13	27.5	22	17	6.5	45	•
MEDIUM DUTY A	80	40	61	20	70	38	18	40	28	24	8.5	110	•
HEAVY DUTY A	120	62	95	30	106	57	27	60	48	38	12.5	225	•

MOULD LATCH TYPE B


CODE	L	L1	L2	L3	W	W1	W2	W3	T	T1	D1	FORCE (kg)	PRICE
MEDIUM DUTY-B	78	33	60	15	68	38	18	40	38	19.5	8.5	500	•
HEAVY DUTY-B	91	37	72	17	103	51	30	58	39.5	31	10.5	900	•

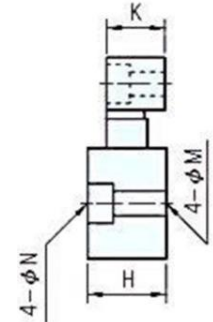
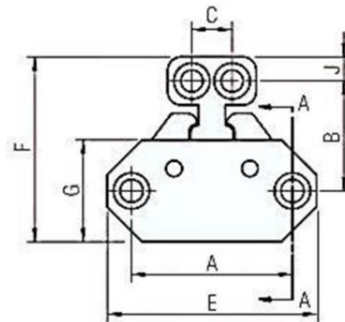
MOULD LATCH TYPE BL


CODE	L	L1	L2	W	W1	W2	W3	W4	T	T1	D1	FORCE (kg)	PRICE
MEDIUM DUTY-BL	78	18	60	116	38	58	15	15	28	20.3	8.5	500	•
HEAVY DUTY-BL	91	21	72	142	51	73	17	17	39.5	30.6	10.5	900	•

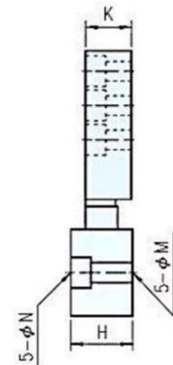
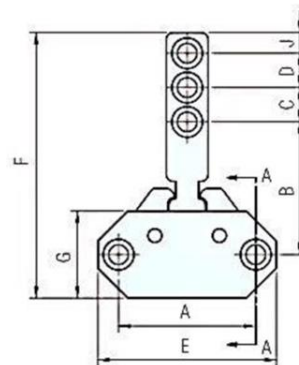
MOULD LATCH TYPE F


CODE	A1	A2	A3	A4	D1	D2	D3	D4	D5	H1	H2	H3	L1	L2	PRICE
TYPE F - A	6	12	21	10	5	10.5	6.5	11	6.5	48	20	28	6.5	6.5	•
TYPE F - B	20	12.5	23	11	6	17	10	17	10	62.5	25	33	10	10	•

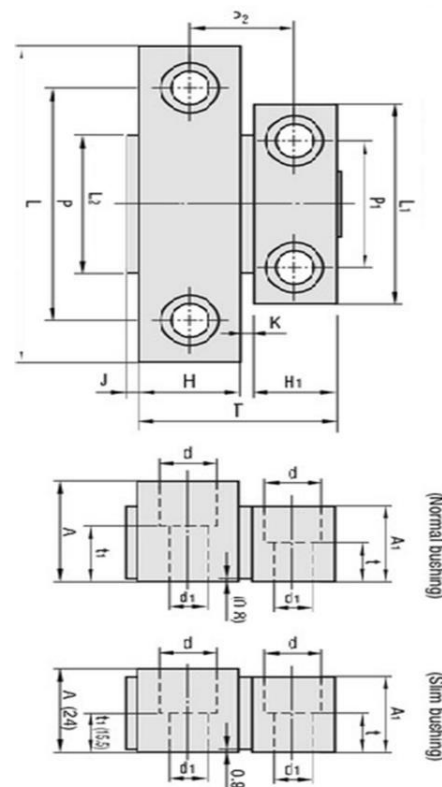
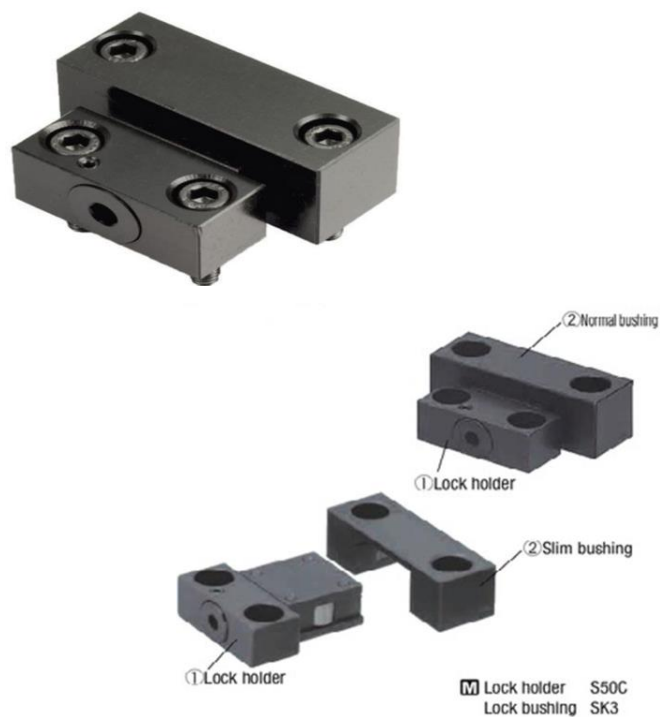
CODE	P	P1	P2	P4	R1	T1	T2	T3	W1	W2	W3	Z1	M1
TYPE F - A	18	25	60	12.5	R4.25	20.5	12	20.5	40	17.5	86	20	M12
TYPE F - B	26	35	70	20	R6.5	30	19.5	25	60	25.5	127.5	21	M14

MOULD LATCH TYPE C


CODE	A	B	C	E	F	G	H	J	K	M	N	FORCE (KGS)	PRICE
MEDIUM DUTY - TYPE C	60	40	15	78	68	38	27	9	20	8.5	13.6x9	300	•
HEAVY DUTY - TYPE C	72	58	17	91	93	51	39.4	9	31	10.6	16.6x11	500	•

MOULD LATCH TYPE CL


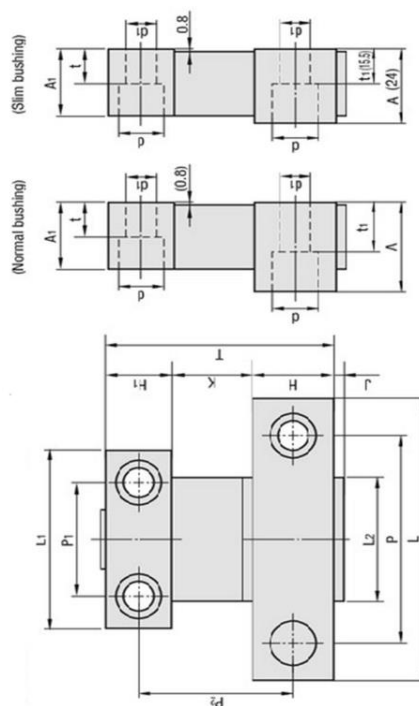
CODE	A	B	C	D	E	F	G	H	J	K	M	N	FORCE (KGS)	PRICE
MEDIUM DUTY - TYPE CL	60	58	15	15	78	116	38	27	9	20	8.5	13.6x9	300	•
HEAVY DUTY - TYPE CL	72	73	17	17	91	142	51	39.4	9	31	10.6	16.6x11	500	•

MOULD LATCH TYPE D

NORMAL BUSHING

CODE	L	L1	L2	T	H	H1	J	K	P	P1	P2	A	A1	t	T1	d	d1	PRICE
TYPE D - 10	48	36	25	42	22	18	2	2	36	24	22	24	16	9.5	18	11	6.5	•
TYPE D - 20	54	42						9	16	•								
TYPE D - 30	65	46	35	48.5	25	20	3.5	3.5	50	31	26	27	19	9.5	17	14	9	•
TYPE D - 60	73	50		56.5				11.5	52	33								34
TYPE D - 80				103				65	48	58	30							24

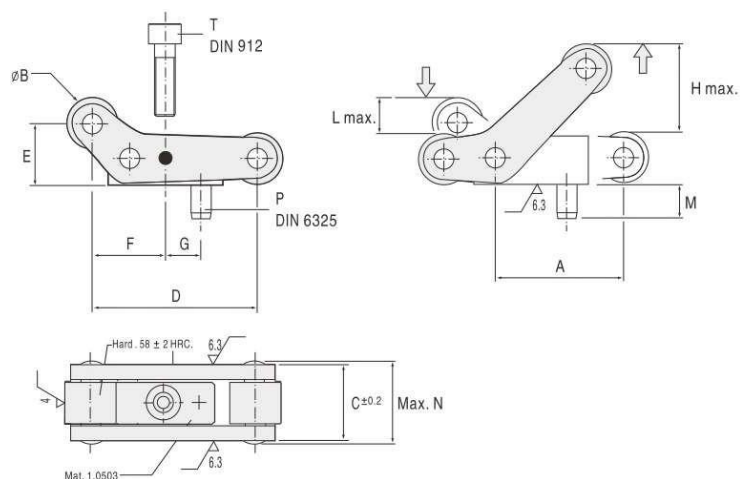
SLIM BUSHING

CODE	L	L1	L2	T	H	H1	J	K	P	P1	P2	A	A1	t	T1	D	D1	PRICE
TYPE DS - 30	65	46	35	48.5	25	20	3.5	3.5	50	31	26	24	19	9.5	15.5	11	7	•
TYPE DS - 60	73	50		56.5				11.5	52	33						34	•	
TYPE DS - 80S				14				9	•									

MOULD LATCH TYPE DL


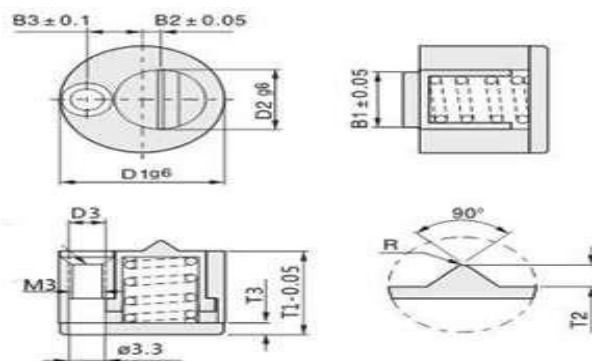
CODE	L	L1	L2	T	H	H1	J	K	P	P1	P2	A	A1	t	t1	d	d1	PRICE
TYPE DL – 60L	73	50	35	79.5	25	20	3.5	34.5	52	33	57	27	19	9.5	17	14	9	•
TYPE DL – 80				87.5				42.5			65							•
TYPE DL – 100L	103	65	48	89	30	24	4	35	76	42	62	34	25	13	19	17	11	•
TYPE DLS - 80	73	50	35	87.5	25	20	3.5	42.5	52	33	65	24	19	9.5	15.5	14	9	•

PLATE ACCELERATOR

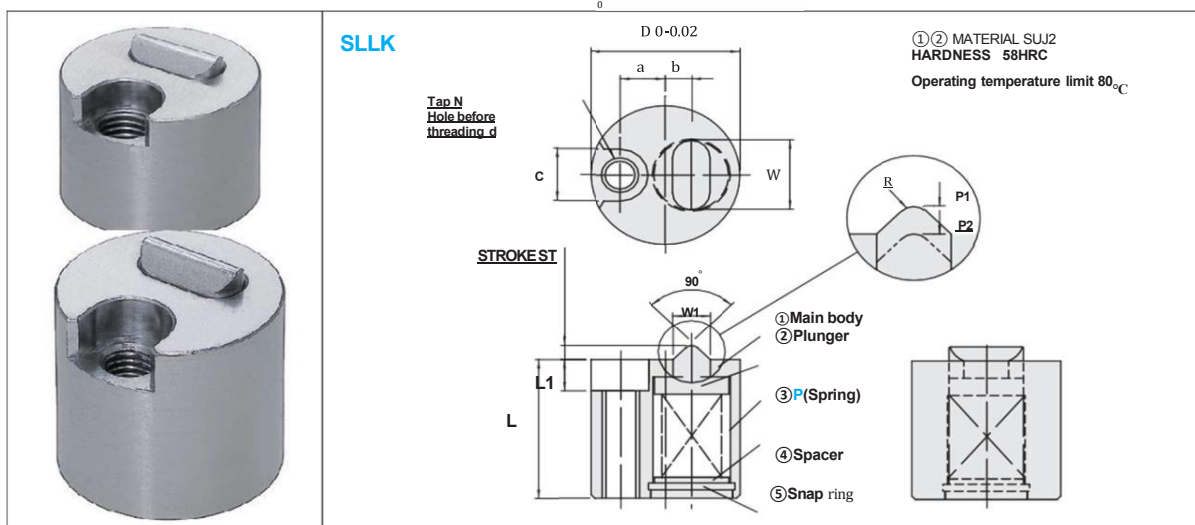


CODE	A	B	C	D	E	F	G	H(max)	L(max)	M	N	P	T	Max Force
RRT-PA20	20	8	13.2	25.8	9.4	11.4	6	13.6	5.5	5	15	2.5x10	M3x12	125kg
RRT-PA25	25	10	16	32.3	11.8	14.3	7	17	6.8	6	18.5	3x12	M4x16	250kg
RRT-PA37	37.5	15	22	48.5	17.7	21.5	10.5	25.5	10.2	8	25	4x16	M6x25	350kg
RRT-PA50	50	20	30	64.6	23.6	28.6	14	34	13.6	10	34	5x20	M8x30	800kg

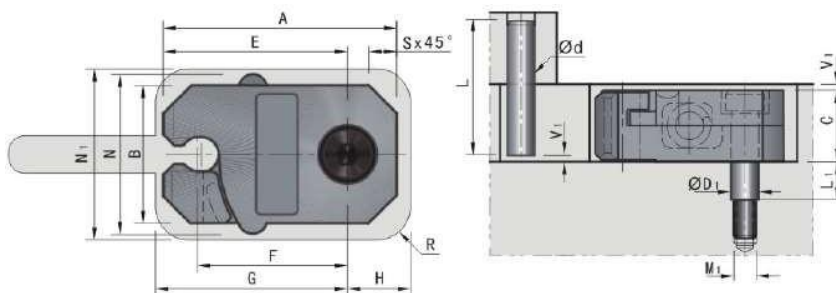
SLIDE RETAINERS



CODE	D1	D2	B1	B2	B3	T1	T2	T3	R	D3	Install Screw	Slide Weight (kgf)
RRT-Z5130-13	13	7	6.6	1.4	4.3	10	1.0	1.6	0.35	M3	M2 x 16	3.4
RRT-Z5130-18	18	10	9.6	2.0	6.0	14	1.8	2.0	0.50	M4	M3 x 20	4.2
RRT-Z5130-27	27	15	14.4	3.0	9.0	21	2.8	3.0	0.50	M5	M4 x 25	9.2

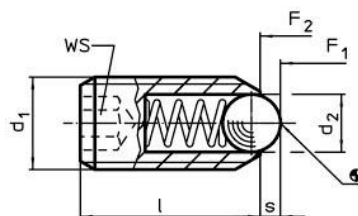


CODE	LOAD (N)		ST	L	L1	a	b	c	d	Bolt Size	TAP	W	W1	R	P(SPRING)
	P1 (min)	P2 (max)													
RR-SLLK-16C	22.5	28.6	1.6	15	3.3	5	2.5	6	3.2	M3	M4	8	4	1	SC 8-15
RR-SLLK-16F	62	78.8													SF 8-15
RR-SLLK-20C	36.7	62.9	2	20	4.5	6	3.5	7.5	4.3	M4	M5	10	5	1.1	SF 10-15
RR-SLLK-20F	64.1	110													SL 10-15

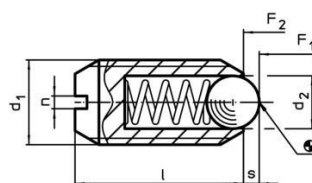


CODE	A	B	C	E	F	N	d	L	G	H
RRT-PSM-0001	38	19	16	31.5	24.89	24	6	32	34.5	10
RRT-PSM-0002	54	32	20	43	34.93	36.5	8	40	46	14.5
RRT-PSM-0003	86	45	30	30	53.98	49.5	10	60	70	22.5

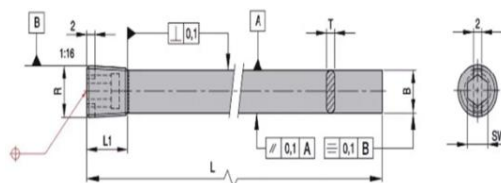
CODE	N1	R	D1	L1	V1	M1	Max Slide Weight (kgf)
RRT-PSM-0001	25.5	8	6	8.5	1.5	10-24x0.5	10
RRT-PSM-0002	38	10	8	10.5		¼-20x0.56	20
RRT-PSM-0003	51	12	10	17		5/16-18x0.62	40

BALL PLUNGER (ALLEN TYPE)

BLACK OXIDE STEEL BODY – HARDENED STEEL BALL – STAINLESS STEEL SPRING

CODE	d1	d2	L	S	WS	SPRING LOAD F1 N~	SPRING LOAD F2 N~
BPA-3	M3	1.5	7.5	0.5	-	-	-
BPA-4	M4	2.5	9	0.8	2.0	8.0	13.0
BPA-5	M5	3.0	14	0.9	2.5	6.0	12.0
BPA-6	M6	3.5	12/15	1.0	3.0	11.0	18.0
BPA-8	M8	4.5	16/18	1.5	4.0	18.0	31.0
BPA-10	M10	6.0	16/23	2.0	5.0	24.0	45.0
BPA-12	M12	8.0	20/25	2.5	6.0	26.0	49.0
BPA-16	M16	10.0	25	3.5	8.0	41.0	86.0
BPA-20	M20	12.0	43	4.5	10.0	66.0	111.0

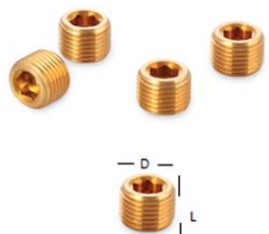
BALL PLUNGER (SCREW TYPE)


CODE	d1	d2	L	S	n	SPRING LOAD F1 N~	SPRING LOAD F2 N~
BPS-3	M3	1.5	7.5	0.5	-	-	-
BPS-4	M4	2.5	9	0.8	0.6	8.0	13.0
BPS-5	M5	3.0	14	0.9	0.8	6.0	12.0
BPS-6	M6	3.5	15	1.0	1.0	11.0	18.0
BPS-8	M8	4.5	18	1.5	1.2	18.0	31.0
BPS-10	M10	6.0	23	2.0	1.5	24.0	45.0
BPS-12	M12	8.0	26	2.5	2.0	26.0	49.0
BPS-16	M16	10.0	33	3.5	2.0	41.0	86.0

BAFFLES


CODE	R	L	T	SW
BAF-1/8-100	1/8-BSP	104	1.6	5
BAF-1/8-200	1/8-BSP	204	2.4	
BAF-1/4-125	1/4-BSP	131		6
BAF-1/4-250	1/4-BSP	258		

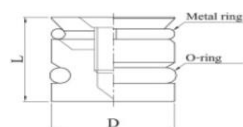
CODE	R	L	T	SW
BAF-3/8-150	3/8-BSP	156	2.4	8
BAF-3/8-300	3/8-BSP	309		10
BAF-1/2-200	1/2-BSP	207		

COOLING PLUGS (THREADED TYPE)


CODE	D	L	HEX
SCTP-8	M8x0.75	8	4
SCTP-10	M10x1.0	8	5
SCTP-12	M12x1.5	8	6
SCTP-14	M14x1.5	10	7
SCTP-1/8 BSP	1/8" BSP	7	5
SCTP-1/4 BSP	1/4" BSP	9	6
SCTP-3/8 BSP	3/8" BSP	10	8

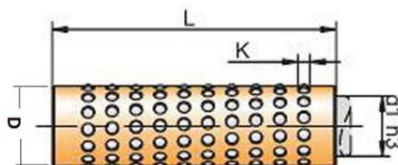
CODE	D	L	HEX
SCTP-1/2 BSP	1/2" BSP	12	10
SCTP-3/4 BSP	3/4" BSP	14	14
SCTP-1/4 BSPT	1/4" BSPT	9	6
SCTP-3/8 BSPT	3/8" BSPT	10	8
SCTP-1/2 BSPT	1/2" BSPT	12	10
SCTP-3/4 BSPT	3/4" BSPT	14	14

(AVAILABLE IN GREEN & BLACK SILICON RUBBER ORING)(SCREW AND ALLEN TYPE)



CODE	D	L
SCP-4	4	8
SCP-6	6	10
SCP-8	8	10
SCP-10	10	10
SCP-12	12	12
SCP-14	14	13

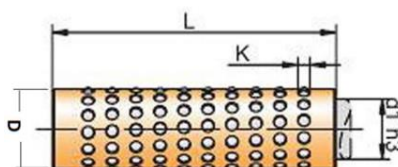
CODE	D	L
SCP-16	16	14
SCP-18	18	16
SCP-20	20	19
SCP-24	24	19
SCP-25	25	19

**BRASS BALL CAGE
(CONCENTRATED) (w.e.f 1-9-21)**


d1	D	L	K	PRICE
12	16	25	2	
		30		
		35		
		40		
		50		
		60		
12	18	25	3	
		30		
		35		
		40		
		50		
		60		
16	22	30	3	
		40		
		50		
		60		
		70		
		80		
18	24	30	3	
		40		
		50		
		60		
		70		
19	25	30	3	
		40		
		50		
		60		
		70		
		80		
20	26	40	3	
		50		
		60		
		70		
		80		
		90		
100				

d1	D	L	K	PRICE
22	28	50	3	
		60		
		70		
		80		
22	30	50	4	
		60		
		70		
		80		
24	30	50	3	
		60		
		70		
		80		
		90		
		100		
24	32	50	4	
		60		
		70		
		80		
		90		
		100		
25	31	30	3	
		40		
		50		
		60		
		70		
		80		
25	33	40	4	
		50		
		60		
		70		
		80		
		90		
100				

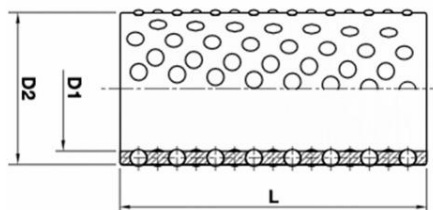
d1	D	L	K	PRICE
26	32	50	3	
		60		
		70		
		80		
		90		
		100		
26	34	50	4	
		60		
		70		
		80		
		90		
		100		
28	36	50	4	
		60		
		70		
		80		
		90		
		100		
30	36	50	3	
		60		
		70		
		80		
		100		
30	38	50	4	
		60		
		70		
		80		
		90		
		100		
30	38	100	4	
		125		
		150		
32	38	50	3	
		60		
		70		
		80		
		90		
		100		

**BRASS BALL CAGE
(CONCENTRATED)**


d1	D	L	K	PRICE
32	40	50	4	
		60		
		70		
		80		
		90		
		100		
		125		
35	43	50	4	
		60		
		70		
		80		
		100		
36	44	50	4	
		60		
		70		
		80		
		100		
38	46	50	4	
		60		
		70		
		80		
		90		
		100		
		125		

d1	D	L	K	PRICE
40	48	50	4	
		60		
		70		
		80		
		90		
		100		
		125		
40	50	50	5	
		60		
		70		
		80		
		100		
42	50	50	4	
		60		
		70		
		80		
		100		
45	53	60	4	
		70		
		80		
		90		
		100		
		125		
		150		

d1	D	L	K	PRICE
45	55	60	5	
		70		
		80		
		90		
		100		
		125		
48	56	60	4	
		70		
		80		
		100		
		125		
50	58	50	4	
		60		
		70		
		80		
		100		
		125		
50	60	50	5	
		60		
		70		
		80		
		100		
60	68	80	4	
		100		
60	70	50	5	
		60		
		70		
		80		
		100		


**ALUMINIUM BALL CAGE
(CONCENTRATED)**

D1	D2	L	K	PRICE
16	22	50	3	
		60		
		70		
20	26	50	3	
		60		
		70		
		80		
22	28	50	3	
		60		
		70		
		80		
24	30	50	3	
		60		
		70		
		80		
24	32	50	4	
		60		
		70		
		80		
25	31	60	3	
		70		
		80		

D1	D2	L	K	PRICE
25	32	60	4	
		70		
		80		
26	34	60	3	
		70		
		80		
28	36	60		
		70		
		80		
30	38	60	4	
		70		
		80		
		100		
32	40	60	4	
		70		
		80		
		100		
40	48	70	4	
		80		
		100		
50	10	80	5	
		100		

GUIDE POST (SMYP & SMYKP)
(w.e.f. 01-6-23)

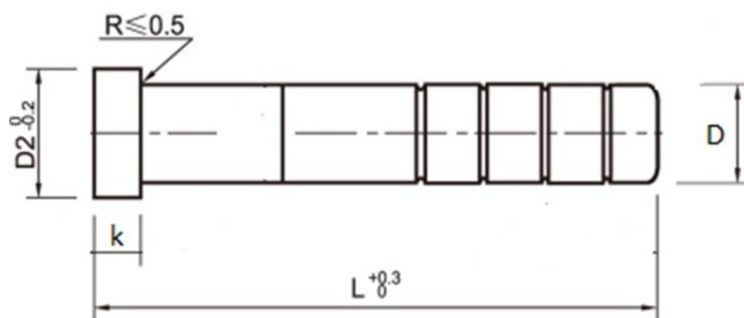

DIA	LENGTH	SMYP (PLAIN)
25	100 110 120	
	130 140 150 160 170 180 200	
30/32	100 110 120 130 140	
	150 160 170 180	
	200 220 240	
	250 260	
38	110 120 130 140 150 160 170 180	
	200 220 240 250 260 280 300	
50	160 170 180 200 220 240 250 260	
	280 300	

DIA	LENGTH	SMYKP
25	80 90 100 110 120	
	130 140 150 160	
	170 180 200	
30/32	90 100 110 120 130 140 150	
	160 170 180 200	
	220 240 250 260	
38	120 130 140 150 160	
	170 180 200 220	
	240 250 260 280 300	
50	170 180 200	
	220 240 250 260	
	280 300	

- PRICE ABOVE ARE WITH ALLEN BOLT & DOWELL PINS

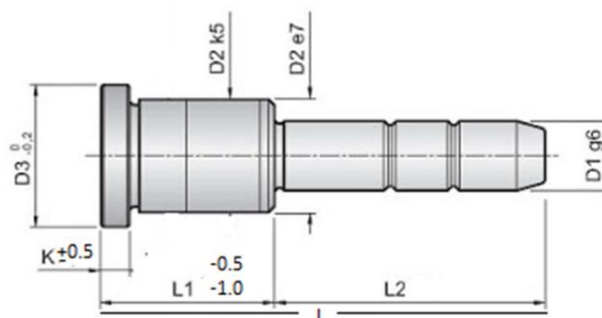
GUIDE PIN (GPA)

(w.e.f. 01-06-23)



MATERIAL	20Cr
HARDNESS	58-62 HRC

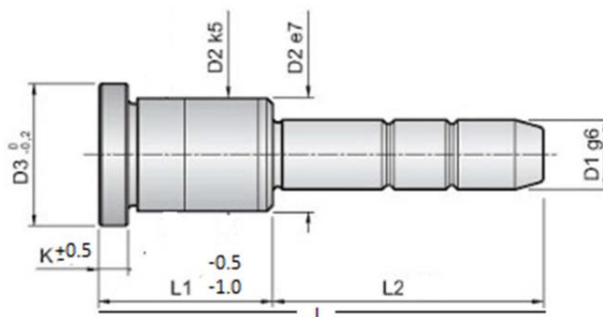
D (g6)	D2	k	L												
			50	70	90	110	130	150	170	190	210	230	250	270	290
16	21	6													
20	25	6													
25	30	8													
30	35	8													
35	40	8													
40	46	10													

SHOULDER GUIDE PIN (GPB)


MATERIAL	S45C
HARDNESS	56-60 HRC

D1	D2	D3	K	L1	L2	L	PRICE
16	22	26	6	25	25	50	
					30	55	
					35	60	
					40	65	
					45	70	
					50	75	
					70	95	
16	22	26	6	30	25	55	
					30	60	
					35	65	
					40	70	
					45	75	
					50	80	
					70	100	
16	22	26	6	36	35	71	
					40	76	
					45	81	
					50	86	
					70	106	
16	22	26	6	46	40	86	
					45	91	
					50	96	
					70	116	
16	22	26	6	56	50	106	
					70	126	
					90	146	
20	30	35	6	30	30	60	
					35	65	
					40	70	
					45	75	
					50	80	
20	30	35	6	76	70	146	
					90	166	
					110	186	
					130	206	

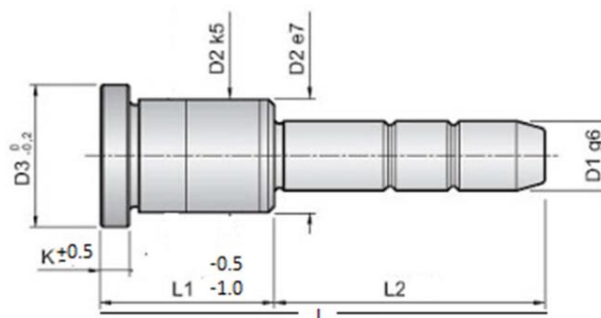
D1	D2	D3	K	L1	L2	L	PRICE
20	30	35	6	36	35	71	
					40	76	
					45	81	
					50	86	
					70	106	
					100	136	
20	30	35	6	46	40	86	
					45	91	
					50	96	
					60	106	
					70	116	
					90	136	
20	30	35	6	56	40	96	
					50	106	
					70	126	
					90	146	
20	30	35	6	66	40	106	
					50	116	
					70	136	
					90	156	
20	30	35	6	76	110	176	
					50	126	
					70	146	
20	30	35	6	76	90	166	
					110	186	

SHOULDER GUIDE PIN (GPB)


MATERIAL	S45C
HARDNESS	56-58 HRC

D1	D2	D3	K	L1	L2	L	PRICE
25	35	40	8	36	40	76	
					50	86	
					70	106	
					100	136	
25	35	40	8	46	50	96	
					70	116	
					90	136	
					110	156	
25	35	40	8	56	50	106	
					70	126	
					90	146	
					120	176	
25	35	40	8	66	70	136	
					90	156	
					110	176	
					140	206	
25	35	40	8	76	70	146	
					90	166	
					110	186	
					130	206	
					150	226	
25	35	40	8	86	90	176	
					110	196	
					130	216	
					140	226	
					150	236	
25	35	40	8	96	90	186	
					110	206	
					130	216	
					150	236	

D1	D2	D3	K	L1	L2	L	PRICE
25	35	40	8	106	90	196	
					110	216	
					130	236	
					150	256	
25	35	40	8	116	110	226	
					130	246	
					150	266	
25	35	40	8	126	110	236	
					130	256	
25	35	40	8	136	130	266	
					150	286	
30	40	48	8	46	40	86	
					50	96	
					70	116	
					100	146	
30	40	48	8	56	70	126	
					90	146	
					110	166	
30	40	48	8	66	130	186	
					70	136	
					90	156	
30	40	48	8	76	110	176	
					130	196	
					70	146	
					90	166	
30	40	48	8	76	110	186	
					130	206	

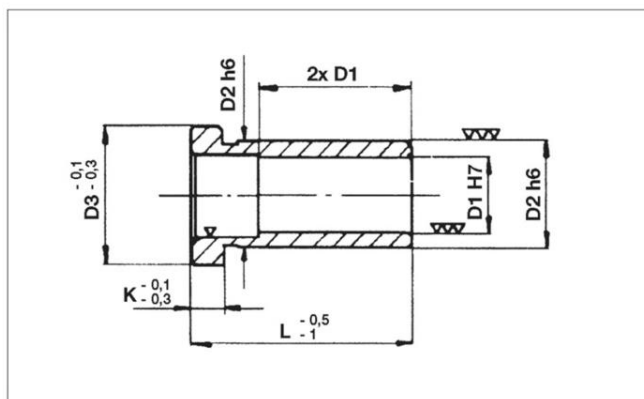
SHOULDER GUIDE PIN (GPB)


MATERIAL	S45C
HARDNESS	56-58 HRC

D1	D2	D3	K	L1	L2	L	PRICE
30	40	48	8	86	90	176	
					110	196	
					130	216	
					150	236	
30	40	48	8	96	90	186	
					110	206	
					130	226	
					150	246	
30	40	48	8	106	110	216	
					130	236	
					150	256	
					170	276	
30	40	48	8	116	130	246	
					150	266	
					170	286	

D1	D2	D3	K	L1	L2	L	PRICE
30	40	48	8	126	130	256	
					150	276	
					170	296	
					190	216	
					130	266	
30	40	48	8	136	150	286	
					170	306	
					190	326	
					170	326	
30	40	48	8	156	190	346	
					170	346	
30	40	48	8	176	170	346	
					190	366	

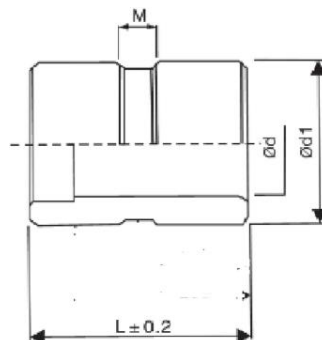
SHOULDER GUIDE BUSH (GBA)



MATERIAL	20Cr
HARDNESS	58-62 HRC

D1	D2	D1	K	L													
				25	30	35	45	55	65	75	86	96	106	116	126	136	156
16	22	26	6														
20	30	35	6														
25	35	40	8														
30	42	48	8														
35	47	53	8														
40	55	61	10														

PLAIN GUIDE BUSH (GBB)



MATERIAL	20Cr
HARDNESS	58-62 HRC

d	d1	M	L											
			25	30	35	45	55	65	75	86	96	106	116	126
16	22	6												
20	30	6												
25	35	8												
30	42	8												
35	47	8												
40	55	8												



160 CM & 220 CM



140 CM WITH PLASTIC HANDLE



TAPER FILE SETS



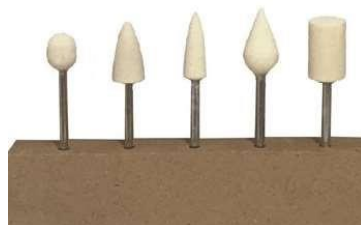
MACHINE FILE DIAMOND



MOUNTED CUTTER SETS



AIR GRINDER



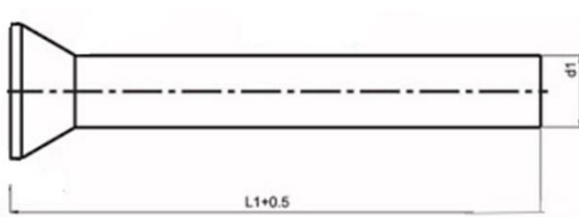
FELT BUFF WHEELS



YELLOW POLISHING STONES

HSS PUNCHES (M2 MATERIAL)

(w.e.f 01-04-22)



HARDNESS – HEAD 45 ±5 HRC : SHANK 62 ±2 HRC

DIA (d1) (-0.001 to -0.015)	L1					
	50mm	70mm	80mm	100mm	125mm	150mm
1.0mm - 1.9mm (WH)						
2.0mm - 2.5mm						
2.6mm - 2.9mm						
3.0mm - 3.9mm						
4.0mm - 4.4mm						
4.5mm - 4.9mm						
5.0mm - 5.4mm						
5.5mm - 5.9mm						
6.0mm - 6.4mm						
6.5mm - 7.4mm						
7.5mm - 8.4mm						
8.5mm - 9.4mm						
9.5mm - 10.4mm						
10.5mm - 11.4mm						
11.5mm - 12.4mm						
12.5mm - 13.4mm						
13.5mm - 14.4mm						
14.5mm - 15.4mm						
15.5mm - 16.4mm						
16.5mm - 17.4mm						
17.5mm - 18.4mm						
18.5mm - 19.4mm						
19.5mm - 20.4mm						

• WH = WHITE HEAD

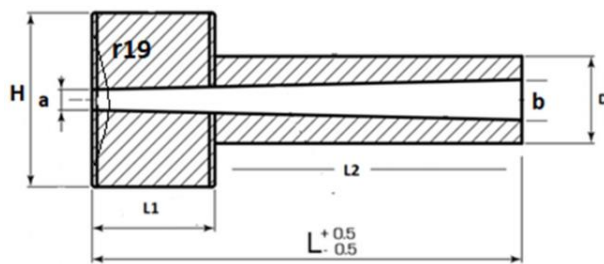


**PUNCHES (EN31 MATERIAL)
(LOCAL QUALITY)**

WHITE FINISH

HARDNESS - 56 ±2 HRC

DIA (d1) (-01 to -0.02)	L1			
	50mm	70mm	80mm	100mm
1.0mm - 2.5mm				
2.6mm - 2.9mm				
3.0mm - 3.4mm				
3.5mm - 3.9mm				
4.0mm - 4.4mm				
4.5mm - 4.9mm				
5.0mm - 5.4mm				
5.5mm - 5.9mm				
6.0mm - 6.4mm				
6.5mm - 7.4mm				
7.5mm - 8.4mm				
8.5mm - 9.4mm				
9.5mm - 10.4mm				
10.5mm - 11.4mm				
11.5mm - 12.4mm				
12.5mm - 13.4mm				
13.5mm - 14.4mm				
14.5mm - 15.4mm				
15.5mm - 16.4mm				
16.5mm - 17.4mm				
17.5mm - 18.4mm				
18.5mm - 19.4mm				
19.5mm - 20.4mm				

SPRU BUSH (NON HARDENED)
(w.e.f. 01-06-23)


D	L2	L1	L	H	(a-b)	PRICE
12.0,12.7,13.5,16.0,16.5,20.0,20.5,27.0	25	25	50	30	(3.3-3.5)- (6.5-7.0)	
	32		57			
	40	25	65	30	(3.4-3.7)- (7.0-8.0)	
	50		75			
	65		90			
	75		100			
	90		115			
	100		125			
	125		150			
	150		175			
	175	200				
	200	225				
	225	25	250	30	(3.8-4.5)- (8.0-10.0)	
	250		275			

SPRU BUSH (HARDENED)

D (g6)	L2	L1	L	H	(a-b)	PRICE
12.0,16.0,20.0	25	25	50	30	3.5-7.0	
	32		57			
	40		65		3.5-8.0	
	50		75			
	65		90			
	75		100			
	90		115			
	100		125			
	125		150			
	150		175			

(LIST w.e.f 01-06-23)



SIZE	THREAD & SLOT	PRICE
20x40x100	M12x14	
20x40x125	M12x14	
25x40x100	M16x17	
25x40x125	M16x17	
25x50x150	M16x17	
25x50x200	M16x17	
30x60x150	M20x22	
30x60x200	M20x22	



STEP CLAMP		
30x50x125	M16x18	750
30x50x150	M16x18	1000

LEVEL BOLT		
M20		

T-NUTS		
20x20	M10x12	
22x22	M12x14	
25x25	M12x16	
28x28	M16x18	
32x32	M16x22	
36x36	M20x24	

HEX NUT		
M12		
M16		
M20		

LONG NUT		
M12		
M16		
M20		

FLENCH NUT		
M12		
M16		
M20		

WASHER		
M12		
M16		
M20		



T-BOLT	
SIZE	PRICE
M16x100	
M16x125	
M16x160	
M16x200	
M16x250	
M16x300	
M20x100	
M20x125	
M20x160	
M20x200	
M20x250	
M20x300	



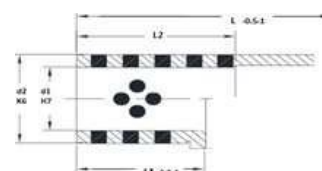
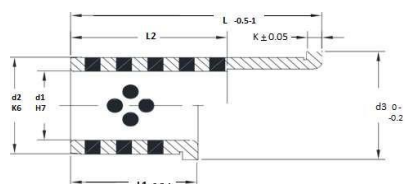
STUD	
12x80	
12x100	
12x125	
12x160	
12x200	
12x250	
16x100	
16x125	
16x160	
16x200	
16x250	
16x300	
20x100	
20x125	
20x160	
20x200	
20x250	
20x300	



C-TYPE CLAMPS (With Bolts)	
16x130	
16x150	
20x180	
24x220	

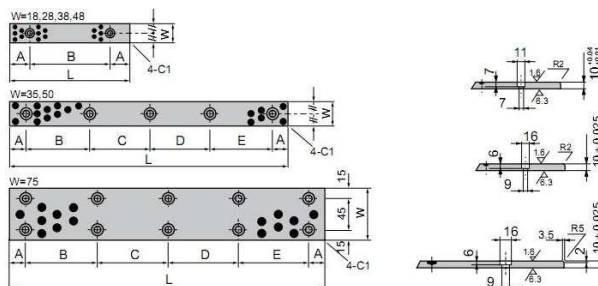


CLAMPING KIT	
M12 (58pcs)	
M16 (58pcs)	
M20 (58pcs)	

OILLESS BUSH WITH COLLAR
OILLESS BUSH PLAIN


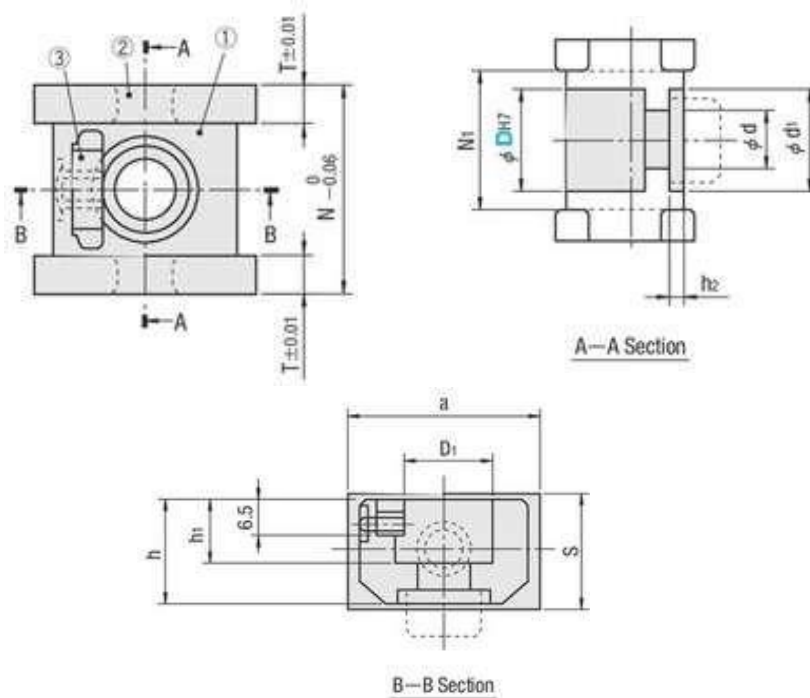
CODE	d1	d2	d3	k	L				
RRTBF-1625	16	22	26	6	25				
RRTBF-1630					30				
RRTBF-1636					36				
RRTBF-1646					46				
RRTBF-2030	20	30	35	6	30				
RRTBF-2036					36				
RRTBF-2046					46				
RRTBF-2536					36				
RRTBF-2546	25	35	40	8	46				
RRTBF-2556					56				
RRTBF-3046	30	42	48	8	46				
RRTBF-3056					56				
RRTBF-3066					66				
RRTBF-3076					76				
RRTBF-3086					86				
RRTBF-3096					96				
RRTBF-4066					40	55	61	10	66
RRTBF-4076									76
RRTBF-4086	86								
RRTBF-4096	96								
RRTBF-5096	96								
RRTBF-50106	50	70	76	10	106				
RRTBF-50116					116				
RRTBF-50126					126				
RRTBF-50136					136				

CODE	d1	d2	L
RRTOB-1625	16	22	25
RRTOB-1630			30
RRTOB-2030	20	30	30
RRTOB-2036			36
RRTOB-2536	25	35	36
RRTOB-2546			46
RRTOB-3046	30	42	46
RRTOB-3056			56
RRTOB-3066			66
RRTOB-4056			56
RRTOB-4066	40	55	66
RRTOB-4076			76
RRTOB-4086			86
RRTOB-4086			96
RRTOB-5076	50	70	76
RRTOB-5086			86
RRTOB-5096			96

OILLESS PLATES


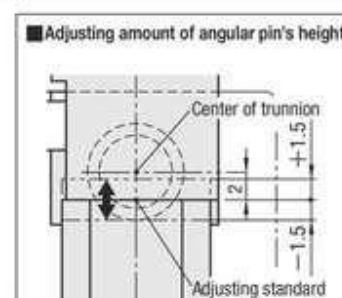
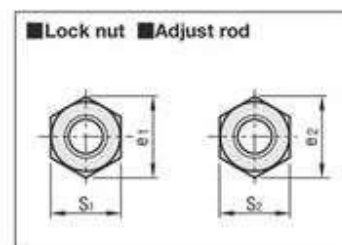
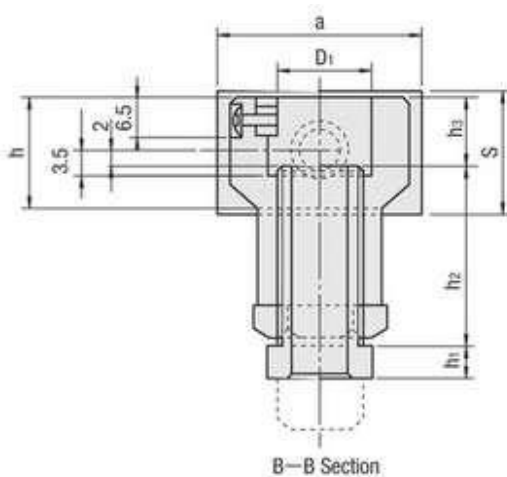
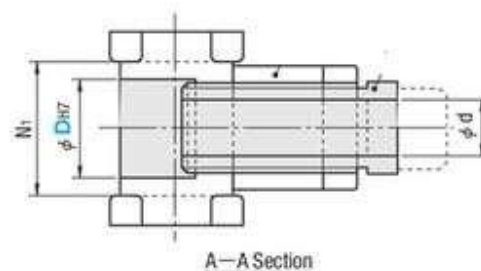
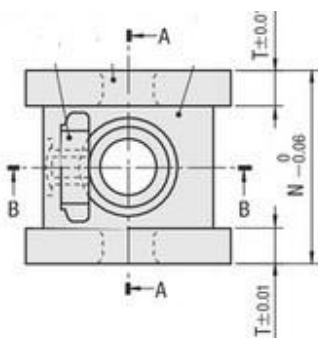
CODE	W	L		A	B	C	D	SCREW HOLE	NO.OF HOLES		
STOP-1875	18	75	0 - 0.02	15	45			M6	2		
STOP-18100		100		25	50						
STOP-18125		125		25	75						
STOP-18150		150		25	100						
STOP-2875	28	75		15	45						
STOP-28100		100		25	50						
STOP-28125		125		25	75						
STOP-28150		150		25	100						
STOP-35100	35	100		20	60					M8	3
STOP-35150		150		20	55	55					
STOP-3875	38	75	0 - 0.03	15	45			M6	2		
STOP-38100		100		25	50						
STOP-38125		125		25	75						
STOP-38150		150		25	100						
STOP-4875	48	75		15	45						
STOP-48100		100		25	50						
STOP-48125		125		25	75						
STOP-48150		150		25	100						
STOP-50100	50	100		20	60					M8	2
STOP-50150		150		20	55	55					3
STOP-50200		200	20	55	50	55	4				
STOP-75150	75	150	20	110			6				
STOP-75200		200	20	80	80		6				
STOP-75250		250	20	105	105		6				
STOP-75300		300	20	85	90	85	8				

**OIL FREE INCLINED PIN HOLDER
(FIXED TYPE)**



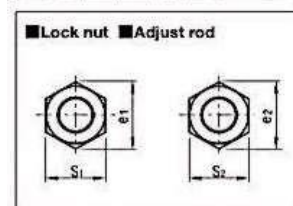
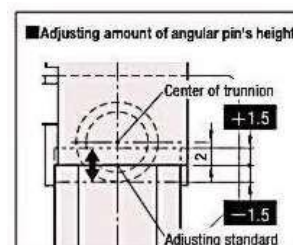
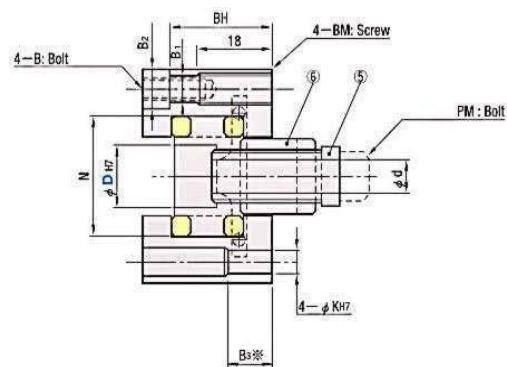
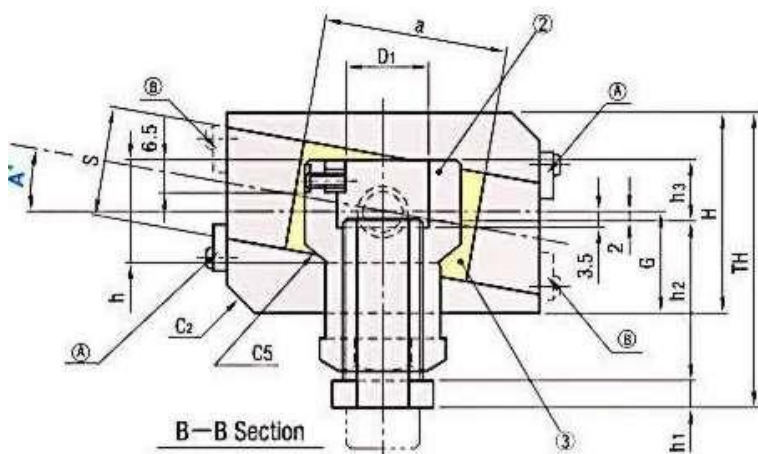
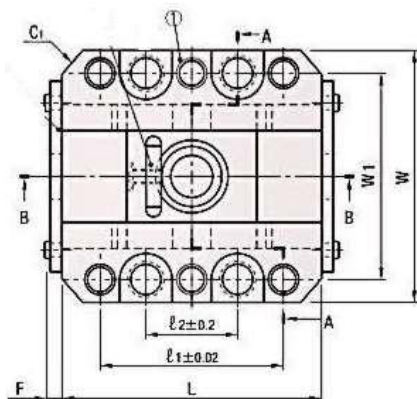
CODE	D	D1	d	d1	h	h2	N	N1	S	a	T	PRICE
SSCZNP 12	12	11	5.5	-	16	-	30	17	20	35	6.5	•
SSCZNP 16	16	15	9	16	18	3	33	20	20	40	6.5	•
SSCZNP 20	20	18	11	20	22	5.5	38	25	24	40	6.5	•
SSCZNP 25	25	22	11	20	26	5.5	45	31	26	45	7	•
SSCZNP 30	30	27.5	11	20	30	3.5	51	36	30	55	7.5	•

**OIL FREE INCLINED PIN HOLDER
(FIXED TYPE)**



CODE	D	D1	d	h	h1	h2	h3	N	N1	S	a	T	S1	e1	S2	e2	PRICE
SSCZAP 12	12	11	5.5	16	6	33	10	30	17	20	35	6.5	17	19.6	12	13.9	•
SSCZAP 16	16	15	9	18	6	33	11	33	20	20	40	6.5	21	24.2	16	18.5	•
SSCZAP 20	20	18	11	22	6	36	13	38	25	24	40	6.5	24	27.7	19	21.9	•
SSCZAP 25	25	22	11	26	6	39	15	45	31	26	45	7	24	27.7	19	21.9	•
SSCZAP 30	30	27.5	11	30	6	41	17	51	36	30	55	7.5	24	27.7	19	21.9	•

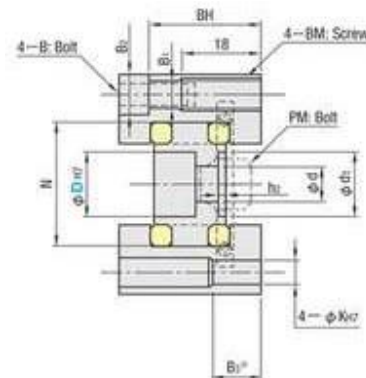
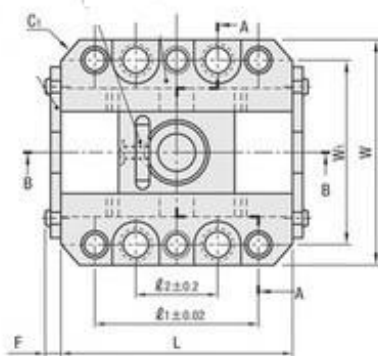
OIL FREE SLIDE UNITS



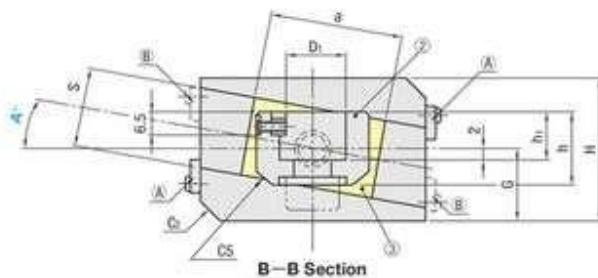
CODE	SLIDE BASE						ANGULAR PIN HOLDER						SLIDE PLATE			TH	G	F	MOUNTING ANGLE OF SLIDE PLATE A°	PRICE
	D	W	L	H	C1	C2	D1	d	h	h1	h2	h3	N	S	A					
SSCZA 12	12	56	55	35	5	-	11	5.5	16	6	33	10	30	20	35	58.5	17.5	4.65	0 – 10 (TO ORDER – CODE & A°)	•
SSCZA 16	16	60	65	36	6	-	15	9	18	6	33	11	33	20	40	59	18	4.65		•
SSCZA 20	20	68	70	43	6	5	18	11	22	6	36	13	38	24	40	65.5	21.5	4.65		•
SSCZA 25	25	75	80	45	6	5	22	11	26	6	39	15	45	26	45	69.5	22.5	4.65		•
SSCZA 30	30	81	95	54	6	5	27.5	11	30	6	41	17	51	30	55	76	27	4.65		•

CODE	BOLT HOLE DIMENSIONS											LOCK NUT		ADJUST ROD	
	D	ø1	ø2	W1	B1	B2	B3	BM	BH	K	S1	e1	S2	e2	
SSCZA 12	12	56	55	35	5	-	11	5.5	16	6	33	10	30	20	
SSCZA 16	16	60	65	36	6	-	15	9	18	6	33	11	33	20	
SSCZA 20	20	68	70	43	6	5	18	11	22	6	36	13	38	24	
SSCZA 25	25	75	80	45	6	5	22	11	26	6	39	15	45	26	
SSCZA 30	30	81	95	54	6	5	27.5	11	30	6	41	17	51	30	

OIL FREE SLIDE UNITS



A-A Section



B-B Section

CODE	SLIDE BASE						ANGULAR PIN HOLDER						SLIDE PLATE			G	F	MOUNTING ANGLE OF SLIDE PLATE A°	PRICE
	D	W	L	H	C1	C2	D1	d	d1	h	h1	h2	N	S	A				
SSCZN 12	12	56	55	35	5	-	11	5.5	-	16	10	-	30	20	35	17.5	4.65	0 – 10 (TO ORDER – CODE & A°)	•
SSCZN 16	16	60	65	36	6	-	15	9	16	18	11	3	33	20	40	18	4.65		•
SSCZN 20	20	68	70	43	6	5	18	11	20	22	13	5.5	38	24	40	21.5	4.65		•
SSCZN 25	25	75	80	45	6	5	22	11	20	26	15	5.5	45	26	45	22.5	4.65		•
SSCZN 30	30	81	95	54	6	5	27.5	11	20	30	17	5.5	51	30	55	27	4.65		•

CODE	BOLT HOLE DIMENSIONS									
	D	ϕ1	ϕ2	W1	B1	B2	B3	BM	BH	K
SSCZA 12	12	42	21	45	6.6	11	15	M8	28.5	6
SSCZA 16	16	46	25	48	6.6	11	15	M8	29.5	6
SSCZA 20	20	50	25	55	8.6	13.5	20	M10	34.5	8
SSCZA 25	25	60	35	62	8.6	13.5	20	M10	36.5	8
SSCZA 30	30	75	50	68	8.6	13.5	20	M10	45.5	8



TAPER SHANK DRILLS (M2)
(w.e.f. 01-02-24)

SIZE	PRICE
12.0	*
12.5	*
13.0	*
13.5	*
14.0 MT-1	*
14.0 MT-2	*
14.25	*
14.5	*
15.0	*
15.25	*
15.5	*
15.75	*
16.0	*
16.25	*
16.5	*
16.75	*
17.0	*
17.25	*
17.5	*
17.75	*
18.0	*
18.25	*
18.5	*
18.75	*
19.0	*

SIZE	PRICE
19.25	*
19.5	*
19.75	*
20.0	*
20.25	*
20.5	*
20.75	*
21.0	*
21.5	*
22.0	*
22.5	*
23.0	*
23.5	*
24.0	*
24.5	*
25.0	*
25.5	*
26.0	*
26.5	*
27.0	*
27.5	*
28.0	*
28.5	*
29.0	*
29.5	*

SIZE	PRICE
30.0	*
30.5	*
31.0	*
31.5	*
32.0	*
32.5	*
33.0	*
33.5	*
34.0	*
34.5	*
35.0	*
35.5	*
36.0	*
36.5	*
37.0	*
37.5	*
38.0	*
38.5	*
39.0	*
39.5	*
40.0	*
40.5	*
41.0	*
41.5	*
42.0	*

SIZE	PRICE
42.5	*
43.0	*
43.5	*
44.0	*
44.5	*
45.0	*
45.5	*
46.0	*
46.5	*
47.0	*
47.5	*
48.0	*
48.5	*
49.0	*
49.5	*
50.0	*
9/16"	*
5/8"	*
3/4"	*
7/8"	*
1"	*
1.1/4" MT-4	*

**TAPER SHANK DRILLS
(BLACK FINISH GRADE
2)**

SIZE	PRICE
40.0	*
41.0	*
42.0	*
43.0	*
44.0	*
45.0	*
46.0	*
47.0	*
48.0	*

SIZE	PRICE
49.0	*
50.0	*
51.0	*
52.0	*
53.0	*
54.0	*
55.0	*
56.0	*
57.0	*

SIZE	PRICE
58.0	*
59.0	*
60.0	*
61.0	*
62.0	*
63.0	*
64.0	*
65.0	*
66.0	*

SIZE	PRICE
67.0	*
68.0	*
69.0	*
70.0	*
72.0	*
75.0	*

TAPER SHANK EXTRA LONG DRILLS (M2)

(w.e.f. 01-02-24)

DIA	OAL (TOTAL LENGTH)						
	300	350	400	450	500	550	600
12.0 - 13.0	*	*	*	*	*	*	*
14.0	*	*	*	*	*	*	*
14.5	*	*	*	*	*	*	*
15.0	*	*	*	*	*	*	*
15.5	*	*	*	*	*	*	*
16.0	*	*	*	*	*	*	*
16.5	*	*	*	*	*	*	*
17.0	*	*	*	*	*	*	*
17.5	*	*	*	*	*	*	*
18.0	*	*	*	*	*	*	*
18.5	*	*	*	*	*	*	*
19.0	*	*	*	*	*	*	*
19.5	*	*	*	*	*	*	*
20.0	*	*	*	*	*	*	*
20.5	*	*	*	*	*	*	*
21.0	*	*	*	*	*	*	*
22.0	*	*	*	*	*	*	*
23.0	*	*	*	*	*	*	*
24.0	*	*	*	*	*	*	*
24.5 - 25.0	*	*	*	*	*	*	*
25.4 (1")	*	*	*	*	*	*	*
26.0	*	*	*	*	*	*	*
27.0	*	*	*	*	*	*	*
28.0	*	*	*	*	*	*	*
29.0	*	*	*	*	*	*	*
30.0	*	*	*	*	*	*	*
32.0	*	*	*	*	*	*	*
33.0	*	*	*	*	*	*	*
34.0	*	*	*	*	*	*	*
35.0	*	*	*	*	*	*	*
36.0	*	*	*	*	*	*	*
37.0-38.0	*	*	*	*	*	*	*
39.0-40.0	*	*	*	*	*	*	*
42.0	*	*	*	*	*	*	*
45.0	*	*	*	*	*	*	*
48.0	*	*	*	*	*	*	*
50.0	*	*	*	*	*	*	*
52.0	*	*	*	*	*	*	*
55.0	*	*	*	*	*	*	*
56.0	*	*	*	*	*	*	*
58.0	*	*	*	*	*	*	*
60.0	*	*	*	*	*	*	*
62.0	*	*	*	*	*	*	*


ST. SHANK LONG DRILLS (M2 & M35)
 (w.e.f. 01-02-2024)

SIZE (DxOAL)	M2 Tin Coated	M35 Amber Coated
1.5x70	*	*
2x85	*	*
2x100	*	*
2.5x100	*	*
3x100	*	*
3x125	*	*
3x150	*	*
3x200	*	*
3.2x100	*	*
3.2x125	*	*
3.2x150	*	*
3.3x100	*	*
3.5x100	*	*
3.5x125	*	*
3.5x150	*	*
3.5x200	*	*
4x100	*	*
4x125	*	*
4x150	*	*
4x200	*	*
4x250	*	*
4x300	*	*
4.2x125	*	*
4.2x150	*	*
4.5x125	*	*
4.5x150	*	*
4.5x200	*	*
5x125	*	*
5x150	*	*
5x200	*	*
5x250	*	*
5x300	*	*
5.2x125	*	*
5.2x150	*	*
5.5x125	*	*
5.5x150	*	*
5.5x200	*	*
6x125	*	*
6x150	*	*
6x200	*	*

SIZE (DxOAL)	M2 Tin Coated	M35 Amber Coated
6x250	*	*
6x300	*	*
6x350	*	*
6x400	*	*
6.35x200	*	*
6.35x250	*	*
6.35x300	*	*
6.5x150	*	*
6.5x200	*	*
6.5x250	*	*
6.5x300	*	*
6.8x150	*	*
6.8x200	*	*
7x150	*	*
7x200	*	*
7x250	*	*
7x300	*	*
7.5x150	*	*
8x150	*	*
8x200	*	*
8x250	*	*
8x300	*	*
8x350	*	*
8x400	*	*
8x500	*	*
8x600	*	*
8.5x150	*	*
8.5x200	*	*
8.5x250	*	*
8.5x300	*	*
9x175	*	*
9x200	*	*
9x250	*	*
9x300	*	*
9.5x175	*	*
9.5x200	*	*
9.5x250	*	*
9.5x300	*	*
10x180	*	*
10x200	*	*

SIZE (DxOAL)	M2 Tin Coated	M35 Amber Coated
10x250	*	*
10x300	*	*
10x350	*	*
10x400	*	*
10x500	*	*
10x600	*	*
10.5x180	*	*
10.5x200	*	*
10.5x250	*	*
10.5x300	*	*
11x200	*	*
11x250	*	*
11x300	*	*
11x400	*	*
11.5x200	*	*
11.5x250	*	*
11.5x300	*	*
12x200	*	*
12x250	*	*
12x300	*	*
12x400	*	*
12x500	*	*
12x600	*	*
12.5x200	*	*
12.5x250	*	*
12.5x300	*	*
12.7x200	*	*
12.7x250	*	*
12.7x300	*	*
13x200	*	*
13x250	*	*
13x300	*	*
13x400	*	*
13x500	*	*
14x250	*	*
14x300	*	*
14x400	*	*
14x500	*	*
	*	*

STUB DRILL
(w.e.f 1-2-24)


SIZE	FLUTE LENGTH	TOTAL LENGTH	PRICE
3.0	18	49	*
3.1 - 3.2	20	52	*
3.3 - 3.5	22	55	*
3.6 - 4.0	22	55	*
4.1 - 4.2	24	58	*
4.3 - 4.5	26	62	*
4.6 - 4.8	26	62	*
4.9 - 5.0	28	66	*
5.1 - 5.5	28	66	*
5.6 - 6.0	31	70	*
6.1 - 6.5	34	74	*
6.6 - 7.0	34	74	*
7.1 - 7.5	34	74	*
7.6 - 8.0	37	79	*
8.1 - 8.5	37	79	*
8.6 - 9.0	40	84	*
9.1 - 9.5	40	84	*
9.6 - 10.0	43	89	*
10.1 - 10.5	43	89	*
10.6 - 11.0	43	89	*
11.1 - 11.5	47	95	*
11.6 - 12.0	47	95	*
12.1 - 12.5	51	102	*
12.6 - 13.0	51	102	*


REDUCED SHANK (1/2" SHANK) DRILL

SIZE	PRICE	SIZE	PRICE	SIZE	PRICE	SIZE	PRICE
13.2	*	17.0	*	22.5	*	28.0	*
13.3	*	17.5	*	23.0	*	28.5	*
13.5	*	18.0	*	23.5	*	29.0	*
13.7	*	18.5	*	24.0	*	30.0	*
13.8	*	19.0	*	24.5	*	31.0	*
14.0	*	19.5	*	25.0	*	32.0	*
14.5	*	20.0	*	25.5	*	35.0	*
15.0	*	20.5	*	26.0	*	38.0	*
15.5	*	21.0	*	26.5	*	40.0	*
16.0	*	21.5	*	27.0	*		
16.5	*	22.0	*	27.5	*		

HSS TAPS (M2)
(w.e.f. 15-01-24)


SIZE	SPPT	SPIRAL	MOQ
M2 x 0.4	*	*	*
M2.5 x 0.45	*	*	*
M3 x 0.50	*	*	*
M3.5 x 0.6	*	*	*
M4 x 0.7	*	*	*
M5 x 0.8	*	*	*
M6 x 1.0	*	*	*
M8 x 1.25	*	*	*
M10 x 1.5	*	*	*
M12 x 1.75	*	*	*
M14 x 2	*	*	*
M16 x 2	*	*	*
M20 x 2.5	*	*	*
M24 x 3	*	*	*

SIZE (BSW)	SPPT	SPIRAL	MOQ
1/8"	*	*	*
5/32"	*	*	*
3/16"	*	*	*
1/4"	*	*	*
5/16"	*	*	*
3/8"	*	*	*
1/2"	*	*	*
5/8"	*	*	-
M8 x 1.0	*	*	-
M10 x 1.0	*	*	-
M12 x 1.0	*	*	-
M12 x 1.5	*	*	-
M16 x 1.0	*	*	-
M16 x 1.5	*	*	-
M20 x 1.5	*	*	-

- (EXTRA DISCOUNT WILL BE GIVEN IF THE ORDER \geq MOQ)

HSS-E (TAPS M35)


SIZE	SPPT	SPIRAL	MOQ
M2.0 x 0.4	*	*	*
M2.5 x 0.45	*	*	*
M3 x 0.50	*	*	*
M3.5 x 0.6	*	*	*
M4 x 0.70	*	*	*
M5 x 0.80	*	*	*
M6 x 1.00	*	*	*
M8 x 1.25	*	*	*
M10 x 1.50	*	*	*
M12 x 1.75	*	*	*
M16 x 2.0	*	*	*
M20 x 2.5	*	*	*

SIZE	SPPT	SPIRAL	MOQ
3/16" BSW	*	*	*
1/4" BSW	*	*	*
5/16" BSW	*	*	*
3/8" BSW	*	*	*
1/2" BSW	*	*	*
5/8" BSW	*	*	*

- (EXTRA DISCOUNT WILL BE GIVEN IF THE ORDER \geq MOQ)

HSS HAND TAPS (M2 & M35)
(w.e.f. 15-01-24)


SIZE	(M2) (PER PIECE) (I,II,III)	(M2) (PER SET)	(M2) TIN COATED (PER SET)
M3 x 0.5	*	*	*
M4 x 0.7	*	*	*
M5 x 0.8	*	*	*
M6 x 1.0	*	*	*
M8 x 1.25	*	*	*
M10 x 1.5	*	*	*
M12 x 1.75	*	*	*
M14 x 2.0	*	*	*
M16 x 2.0	*	*	*
M18 x 2.5	*	*	*
M20 x 2.5	*	*	*
M22 x 2.5	*	*	*
M24 x 3.0	*	*	*
M27 x 3.0	*	*	*
M30 x 3.5	*	*	*
M33 x 3.5	*	*	*
M36 x 4.0	*	*	*

SIZE	(M2) (PER PIECE) (I,II,III)	(M2) (PER SET)	(M2) TIN COATED (PER SET)
1/8" BSW	*	*	*
5/32" BSW	*	*	*
3/16" BSW	*	*	*
1/4" BSW	*	*	*
5/16" BSW	*	*	*
3/8" BSW	*	*	*
1/2" BSW	*	*	*
5/8" BSW	*	*	*
3/4" BSW	*	*	*
7/8" BSW	*	*	*
1" BSW	*	*	*
1/8 BSP	*	*	*
1/4BSP	*	*	*
3/8 BSP	*	*	*
1/2 BSP	*	*	*
3/4" BSP	*	*	*
1" BSP	*	*	*

HSS HAND TAPS (M35)

SIZE	(M35) (PER PIECE) (I,II,III)	PRICE PER SET OF 3 PCS
M3 x 0.5	*	*
M4 x 0.7	*	*
M5 x 0.8	*	*
M6 x 1.0	*	*
M8 x 1.25	*	*
M10 x 1.5	*	*
M12 x 1.75	*	*
M16 x 2.0	*	*
M20 x 2.5	*	*

SIZE	(M35) (PER PIECE) (I,II,III)	PRICE PER SET OF 3 PCS
3/16" BSW	*	*
1/4" BSW	*	*
5/16" BSW	*	*
3/8" BSW	*	*
1/2" BSW	*	*
5/8" BSW	*	*
3/4" BSW	*	*

HSS ENDMILLS (M2 & M35)

(w.e.f. 15-01-24)



SIZE	WHITE FINISH	M2 Tin Ctd 4 Fl.	PRICE (M35)
2.0 - 2.5	*	*	*
3.0	*	*	*
3.5	*	*	*
4.0	*	*	*
5.0	*	*	*
5.5	*	*	*
6.0	*	*	*
7.0	*	*	*
8.0	*	*	*
8.5	*	*	*
9.0	*	*	*
10.0	*	*	*
10.5	*	*	*
11.0	*	*	*
12.0	*	*	*
13.0	*	*	*
14.0	*	*	*
15.0	*	*	*
16.0	*	*	*
20.0	*	*	*

SIZE	WHITE FINISH	M2 Tin Ctd 4 Fl.
17.0	*	*
18.0	*	*
19.0	*	*
20.0	*	*
21.0	*	*
22.0	*	*
23.0	*	*
24.0	*	*
1/8"	*	*
3/16"	*	*
1/4"	*	*
5/16"	*	*
3/8"	*	*
1/2"	*	*
5/8"	*	*
3/4"	*	*
7/8"	*	*
1"	*	*

SIZE	WHITE FINISH	M2 Tin Ctd 4 Fl.	M2 Tin Ctd 6 Fl.
25.0	*	*	*
26.0	*	*	*
27.0	*	*	*
28.0	*	*	*
29.0	*	*	*
30.0	*	*	*
31.0	*	*	*
32.0	*	*	*
35.0	*	*	*
38.0	*	*	*
40.0	*	*	*
42.0	*	*	*
45.0	*	*	*
50.0	*	*	*

HSS LONG ENDMILLS (M2)


DIA	OAL	M2 Tin Ctd (4 Fl.)
4.0	63	*
5.0	68	*
6.0	70	*
8.0	80	*
10.0	95	*
12.0	110	*
14.0	110	*
16.0	125	*
20.0	140	*
25.0	166	*

HSS 2 FLUTE ENDMILLS (M2)


SIZE	M2 Tin Ctd
2.0 - 2.5	*
3.0	*
4.0	*
5.0	*
6.0	*
7.0 - 8.0	*
9.0 - 10.0	*
11.0 - 12.0	*

SIZE	M2 Tin Ctd
1/8"	*
3/16"	*
1/4"	*
5/16"	*
3/8"	*
1/2"	*

HSS CENTRE DRILLS

(w.e.f. 01-01-24)



SIZE	DETAILS	WHITE	TIN COATED	TIN COATED (M35)
BS-1	3/64 x 1/8	*	*	-
BS-2	1/16 x 3/16	*	*	*
BS-3	3/32 x 1/4	*	*	*
BS-4	1/8 x 5/16	*	*	*
BS-5	3/16 x 7/16	*	*	*
BS-6 - A	7/32 x 1/2	*	*	*
BS-6 - B	1/4 x 5/8	*	*	*
BS-7	5/16 x 3/4	*	*	*
		*	*	*
	TYPE A		*	*
A - 1.5	1.5 x 4.0	*	*	*
A - 2.0	2 x 5	*	*	*
A - 2.5	2.5 x 6.3	*	*	*
A - 3.15	3.15 x 8	*	*	*
A - 4.0	4.0 x 10.0	*	*	*
A - 5.0	5 x 12.5	*	*	-
		*	*	*
	TYPE B		*	*
B - 1.0	1.0 x 4.0	*	*	-
B - 1.2	1.2 x 5.0	*	*	-
B - 1.6	1.6 x 6.3	*	*	-
B - 2.0	2.0 x 8.0	*	*	-
B - 2.5	2.5 x 10.0	*	*	-
B - 3.15	3.15 x 11.2	*	*	-
B - 4.0	4.0 x 14.0	*	*	-
B - 5.0	5.0 x 18.0	*	*	-
B - 6.3	6.3 x 20.0	*	*	-



SIZE	OAL	PRICE
BS-3 x 80	80	*
BS-3 x 100	100	*
BS-4 x 80	80	*
BS-4 x 100	100	*
BS-4 x 125	125	*
BS-5 x 100	100	*
BS-5 x 125	125	*
BS-5 x 150	150	*

SIZE	OAL	PRICE
2.5 x 6 x 80	80	*
2.5 x 6 x 100	100	*
3.15 x 8 x 80	80	*
3.15 x 8 x 100	100	*
4 x 10 x 100	100	*
4 x 10 x 125	125	*
4 x 10 x 150	150	*
5 x 12.5 x 100	100	*
5 x 12.5 x 125	125	*
5 x 12.5 x 150	150	*

HSS REAMERS
(w.e.f. 01-02-24)



SIZE	HAND REAMER
2.0	*
2.5	*
3.0	*
4.0	*
5.0	*
6.0	*
7.0	*
8.0	*
9.0	*
10.0	*
11.0	*
12.0	*
13.0	*
	*
1/8"	*
5/32"	*
3/16"	*
1/4"	*
5/16"	*
3/8"	*
7/16"	*
1/2"	*

SIZE	MACHINE REAMER
12.0	*
13.0	*
14.0	*
15.0	*
16.0	*
17.0	*
18.0	*
19.0	*
20.0	*
21.0	*
22.0	*
23.0	*
24.0	*
25.0	*
26.0	*
27.0	*
28.0	*
30.0	*
32.0	*
38.0	*
40.0	*
45.0	*
50.0	*
	*
1/2"	*
9/16"	*
5/8"	*
3/4"	*
7/8"	*
1"	*
1.1/4"	*

HSS CUTTERS

(w.e.f. 01-02-23)

T-SLOT CUTTER



DIA	Thickness	Price
10	2,3	*
12	2,3,4,5	*
16	2,3,4,5,6	*
20	2,3,4	*
20	5,6,8	*
25	3,4,5,6	*
25	8,10	*
30	3,4,5,6	*
30	8,10,12	*

DIA	Thickness	Price
32	3,4,5,6	*
32	8,10,12	*
35	4,5,6	*
35	8,10,12	*
40	5,6,8	*
40	10,12	*
45	5,6,8	*
45	10,12	*

CHAMPHER CUTTER



DIA	Degree	Price
8	60 & 90	*
10		*
12		*
16		*
20		*
20		*
22		*

DIA	Degree	Price
25	60 & 90	*
30		*
32		*
35		*
40		*
40		*
45		*

TAPER SH. CHAMPHER CUTTER



DIA	Degree	Price
14	60 & 90	*
16		*
18		*
20		*
22		*
22		*
25		*

DIA	Degree	Price
30	60 & 90	*
32		*
38		*
40		*
45		*
45		*
50		*

CARBIDE ROTARY CUTTERS

(w.e.f. 01-02-24)



SHANK	BODY DIA	A	C	D	E	F	G	H	L	M	PRICE
3.0	3.0	A3	C3	D3	E3	F3	G3	H3	L3	M3	*
3.0	6.0	A36	C36	D36	E36	F36	G36	H36	L36	M36	*
6.0	6	A6	C6	D6	E6	F6	G6	H6	L6	M6	*
	8	A8	C8	D8	E8	F8	G8	H8	L8	M8	*
	10	A10	C10	D10	E10	F10	G10	H10	L10	M10	*
	12	A12	C12	D12	E12	F12	G12	H12	L12	M12	*
	16	A16	C16	D16	-	-	-	-	-	-	*



3x3 (SET OF 20 PCS) - 1800.00



3x6 (SET OF 10 PCS) - 1100.00

RRT CODE	TOTEM CODE	RRT CODE	TOTEM CODE	RRT CODE	TOTEM CODE	RRT CODE	TOTEM CODE	RRT CODE	TOTEM CODE	RRT CODE	TOTEM CODE	RRT CODE	TOTEM CODE	RRT CODE	TOTEM CODE
A3	MC1	C3	MB1	D3	MS0	E3	M01	F3	MTB1	G3	MT1	H3	MF1	M3	MA1
A36	MC2	C36	MB2	D36	MS1	E36	M02	F36	MTB2	G36	MT3	H36	MF2	M36	MA2
A6	C2	C6	B1	D6	S1	E6	04	F6	TB1	G6	T1	H6	F1	M6	A1
A8	C3	C8	B2	D8	S2	E8	01	F8	TB5	G8	T5	H8	F2	M8	A2
A10	C4	C10	B3	D10	S3	E10	05	F10	TB2	G10	T2	H10	F3	M10	A3
A12	C5	C12	B4	D12	S4	E12	06	F12	TB3	G12	T3	H12	F4	M12	A4
A16	C6	C16	B5	D16	S5	-	-	-	-	-	-	-	-	-	-

➤ ABOVE SHAPES ARE AVAILABLE IN SINGLE CUT AND DOUBLE CUT

FLAT CARBIDE ENDMILLS (RRT)

(w.e.f. 01-03-24)



45 HRC



55 HRC



60 HRC

DIA x TOTAL LENGTH	SHANK DIA	45 HRC No Sticker	55 HRC	60 HRC
0.3 - 0.9 x 50	4.0	*	*	*
1.0 - 3.0 x 50	4.0	*	*	*
1.0 - 3.0 x 50	6.0	*	*	*
3.0 x 75	3.0	*	*	*
3.0 x 100	3.0	*	*	*
3.5 x 50	4.0	*	*	*
4.0 x 50	4.0	*	*	*
4.0 x 75	4.0	*	*	*
4.0 x 100	4.0	*	*	*
4.5 x 50	5.0	*	*	*
5.0 x 50	5.0	*	*	*
5.0 x 75	5.0	*	*	*
5.0 x 100	5.0	*	*	*
5.0 x 150	5.0	*	*	*
5.5 x 50	6.0	*	*	*
6.0 x 50	6.0	*	*	*
6.0 x 75	6.0	*	*	*
6.0 x 100	6.0	*	*	*
6.0 x 150	6.0	*	*	*
6.5 x 60	8.0	*	*	*
7.0 x 60	8.0	*	*	*
8.0 x 60	8.0	*	*	*
8.0 x 75	8.0	*	*	*
8.0 x 100	8.0	*	*	*
8.0 x 150	8.0	*	*	*
8.0 x 200	8.0	*	*	*
9.0 x 75	10.0	*	*	*

DIA x TOTAL LENGTH	SHANK DIA	45 HRC No Sticker	55 HRC	60 HRC
10.0 x 75	10.0	*	*	*
10.0 x 100	10.0	*	*	*
10.0 x 150	10.0	*	*	*
10.0 x 200	10.0	*	*	*
10.0 x 250	10.0	*	*	*
11.0 x 75	12.0	*	*	*
12.0 x 75	12.0	*	*	*
12.0 x 100	12.0	*	*	*
12.0 x 150	12.0	*	*	*
12.0 x 200	12.0	*	*	*
12.0 x 250	12.0	*	*	*
13.0 x 100	14.0	*	*	*
14.0 x 100	14.0	*	*	*
15.0 x 100	16.0	*	*	*
16.0 x 100	16.0	*	*	*
16.0 x 150	16.0	*	*	*
16.0 x 200	16.0	*	*	*
16.0 x 250	16.0	*	*	*
18.0 x 100	18.0	*	*	*
20.0 x 100	20.0	*	*	*
20.0 x 150	20.0	*	*	*
20.0 x 200	20.0	*	*	*
20.0 x 250	20.0	*	*	*
22.0 x 100	22.0	*	*	*
25.0 x 100	25.0	*	*	*
25.0 x 100	25.0	*	*	*
25.0 x 150	25.0	*	*	*

CORNER RADIUS R1/R0.5 CARBIDE ENDMILL

R1/R0.5 55 HRC

SIZE (R1/R0.5)	STD	75mm	100mm	150mm
1mm - 4.0mm	*	*	*	*
5.0mm	*	*	*	*
6.0mm	*	*	*	*
8.0mm	*	*	*	*
10.0mm	*	*	*	*
12.0mm	*	*	*	*
16.0mm	*	*	*	*

BALLNOSE CARBIDE ENDMILLS

DIA x TOTAL LENGTH	SHANK DIA	RRT-45 HRC	55 HRC	60 HRC
0.3 - 0.9 x 50	4.0	-		-
1.0 - 3.0 x 50	4.0	*	*	*
1.0 - 3.0 x 50	6.0	*	*	*
3.0 x 75	3.0	*	*	*
3.0 x 100	3.0	*	*	*
4.0 x 50	4.0	*	*	*
4.0 x 75	4.0	*	*	*
4.0 x 100	4.0	*	*	*
5.0 x 50	5.0	*	*	*
5.0 x 75	5.0	*	*	*
5.0 x 100	5.0	*	*	*
6.0 x 50	6.0	*	*	*
6.0 x 75	6.0	*	*	*
6.0 x 100	6.0	*	*	*
6.0 x 150	6.0	*	*	*
8.0 x 60	8.0	*	*	*
8.0 x 75	8.0	*	*	*
8.0 x 100	8.0	*	*	*
8.0 x 150	8.0	*	*	*
8.0 x 200	8.0	*	*	*

DIA x TOTAL LENGTH	SHANK DIA	RRT-45 HRC	55 HRC	60 HRC
10.0 x 75	*	*	*	*
10.0 x 100	*	*	*	*
10.0 x 150	*	*	*	*
10.0 x 200	*	*	*	*
	*	*	*	*
	*	*	*	*
12.0 x 75	*	*	*	*
12.0 x 100	*	*	*	*
12.0 x 150	*	*	*	*
12.0 x 200	*	*	*	*
	*	*	*	*
	*	*	*	*
	*	*	*	*
	*	*	*	*
16.0 x 100	*	*	*	*
16.0 x 150	*	*	*	*
16.0 x 200	*	*	*	*
	*	*	*	*
20.0 x 100	*	*	*	*
	*	*	*	*

SOLID CARBIDE REAMERS



SIZE (Dia x Flute x Total Length)	PRICE
3.0x15x60	*
4.0x19x75	*
5x23x85	*
6x26x90	*
8x35x110	*
10x35x130	*
12x45x150	*

CARBIDE RODS (FULLY GROUND)



SIZE	PRICE
3x100	*
4x100	*
5x100	*
6x100	*
6x150	*
8x100	*
8x150	*
10x100	*

SIZE	PRICE
10x150	*
12x100	*
12x150	*
16x100	*
16x150	*
20x100	*
20x150	*


SOLID CARBIDE DRILLS (55 HRC)

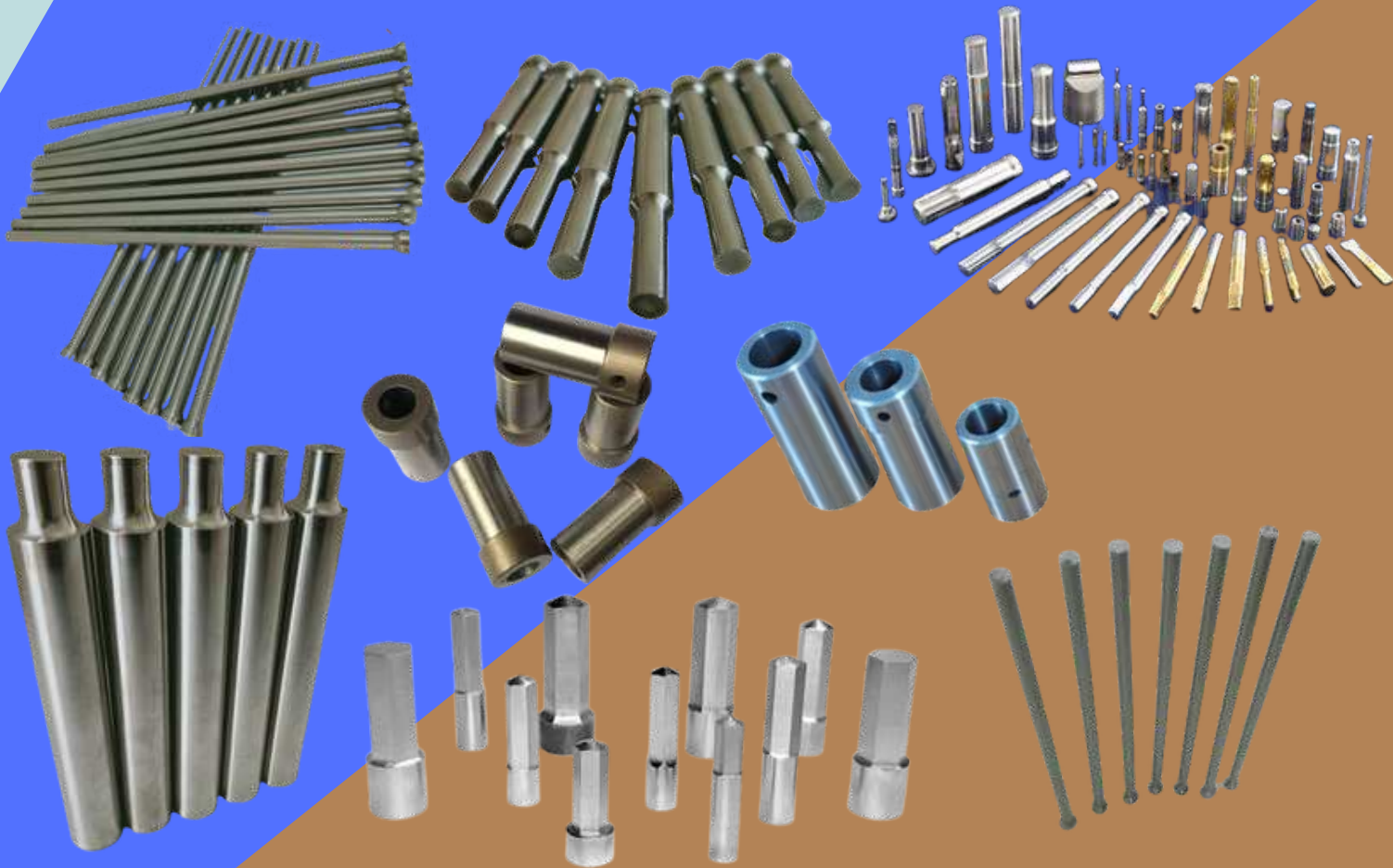
Dia x FL x Total L	PRICE	Dia x FL x Total L	PRICE Per Piece
1.0 - 2.0 x 24 x 49	*	10.1 - 10.9 x 87 x 133	*
2.1 - 2.4 x 27 x 53	*	11.0 x 94 x 142	*
2.5 - 2.8 x 30 x 57	*	11.1 - 11.9 x 94 x 142	*
2.9 - 3.1 x 33 x 61	*	12.0 x 101 x 142	*
3.2 - 3.4 x 37 x 65	*	12.1 - 12.5 x 101 x 142	*
3.5 - 3.7 x 40 x 70	*	12.6 - 13.0 x 110 x 150	*
3.8 - 4.2 x 43 x 75	*	13.5 x 110 x 150	*
4.3 - 4.9 x 47 x 80	*	14.0 x 120 x 160	*
5.0 - 5.1 x 52 x 86	*	14.5 - 15.0 x 120 x 160	*
5.2 - 5.9 x 57 x 90	*	15.5 - 16.0 x 120 x 160	*
6.0 x 60 x 93	*	16.5 - 17.0 x 125 x 185	*
6.1 x 60 x 93	*	17.5 - 18.0 x 130 x 190	*
6.2 - 6.7 x 63 x 100	*	18.5 - 19.0 x 135 x 200	*
6.8 - 7.0 x 69 x 109	*	19.5 - 20.0 x 140 x 205	*
7.1 - 7.9 x 69 x 109	*	21.0 x 145 x 210	*
8.0 x 75 x 115	*	22.0 x 150 x 215	*
8.1 - 8.9 x 75 x 115	*	23.0 x 155 x 220	*
9.0 x 81 x 125	*	24.0 x 160 x 225	*
9.1 - 9.5 x 81 x 125	*	25.0 x 165 x 230	*
9.6 - 10.0 x 87 x 133	*		

STUB DRILLS (55 HRC)



Dia x FL x Total L	PRICE	Dia x FL x Total L	PRICE Per Piece
1.0-2.9x8x40	*	8.0-8.4x41x79	*
3.0x20x62	*	8.5-8.9x47x89	*
3.1-3.4x20x62	*	9.0-9.4x47x89	*
3.5x28x66	*	9.5-9.9x47x89	*
3.6-4.5x28x66	*	10.0-10.5x55x102	*
4.6-4.9x28x66	*	11.0-11.4x55x102	*
5.0-5.5x28x66	*	11.5-11.9x55x102	*
5.6-5.9x28x66	*	12.0-12.5x60x107	*
6.0-6.4x34x79	*	12.6-13.0x60x107	*
6.5-6.9x34x79	*	13.1-13.9x60x107	*
7.0-7.4x34x79	*	14.0-15.5x65x107	*
7.5-7.9x41x79	*	16.0x66x112	*







Contact Us

 #802, Anjani Amores, Kondhwa - Pisoli
Road, Kondhwa BK, Pune 411048
Maharashtra, India

 info@rightradiustools.com
 +91 620-4511-890
+91 917-2817-569
 www.rightradiustools.com